



visions

INSIDE ARCHITECTURE



**True change comes
from the desire to
Look Further.**

*"I have always wanted to create a
pocket door system which is easy
to install and will last forever.*

*I am inspired by the idea of
constantly improving the
performance of this product,
because I want to satisfy everyone
who sells it, installs it and uses it.*

*This is what drives me and
enables me to always
Look Further."*


Luigi De Faveri
Founder of ECLISSE

ATTICO M+T



.01

LOFT MILANO



.02

VILLA ESSE



.05

HOUSE PILAT



.06

HOUSE MS8



.03

HOUSE FV



.04

VILLA NOAL



.07

DeFAVERI SEAT



.08



Facing the sea on one side and the Apennines of central Italy on the other, this apartment occupies a newly built top floor that was added to the building in the renovation. The main aim in this project was to create an open and spacious living area, a welcoming space to be lived in with family and friends, but still allowing the kitchen to be separated if necessary. The choice fell on two colossal sliding glass doors with a minimalist black metal frame, which also characterises the swing glass door that closes off the storage and appliance area of the kitchen. The same concept is reflected in the flared frames of bedroom doors, together with various other black details that stand out from the backdrop light, maritime colours.



ATTICO M+T

.01

PROJECT

From the extension of a 1960s apartment building with a sea view comes a bright penthouse that plays on the contrasts between heavenly hues and black details.

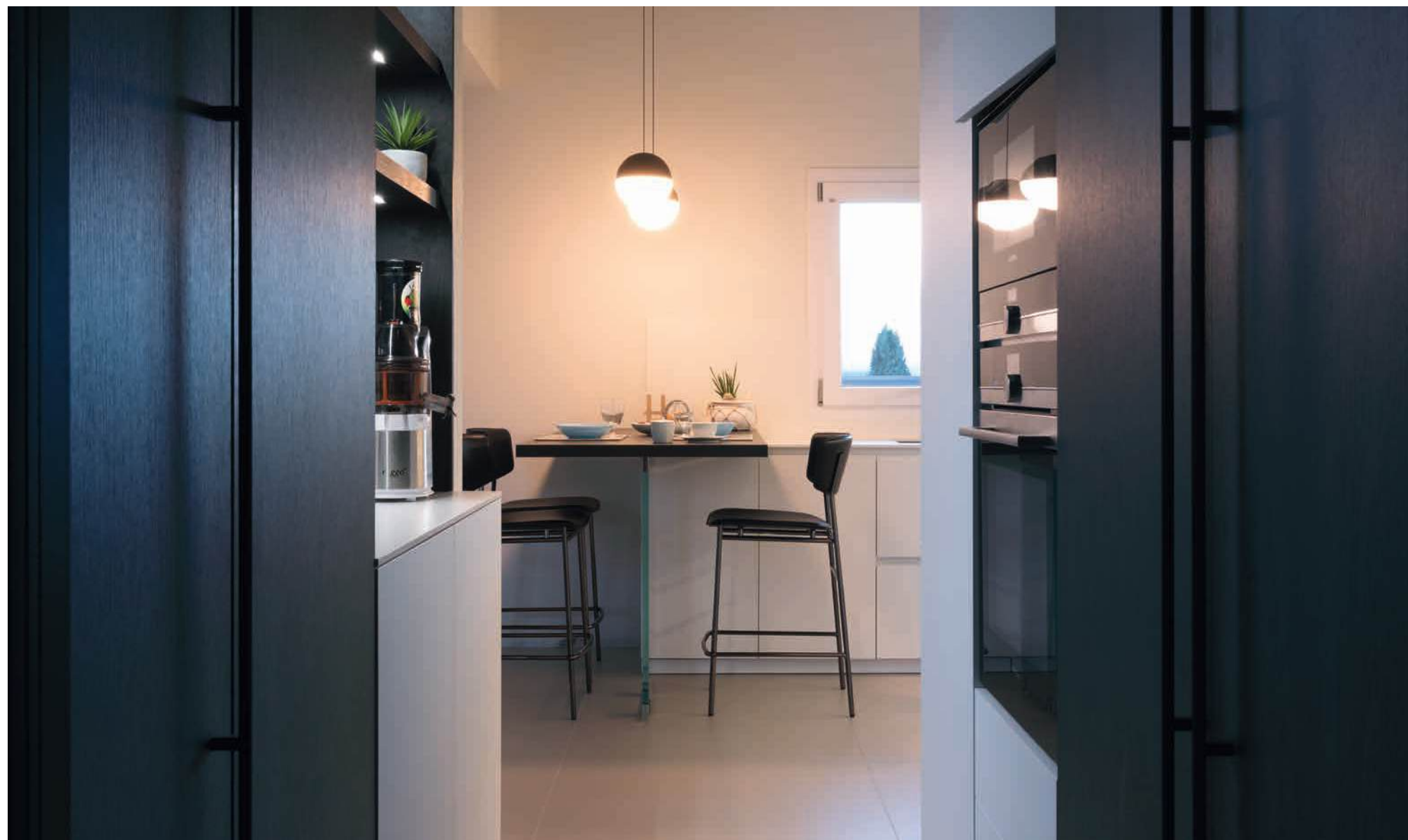
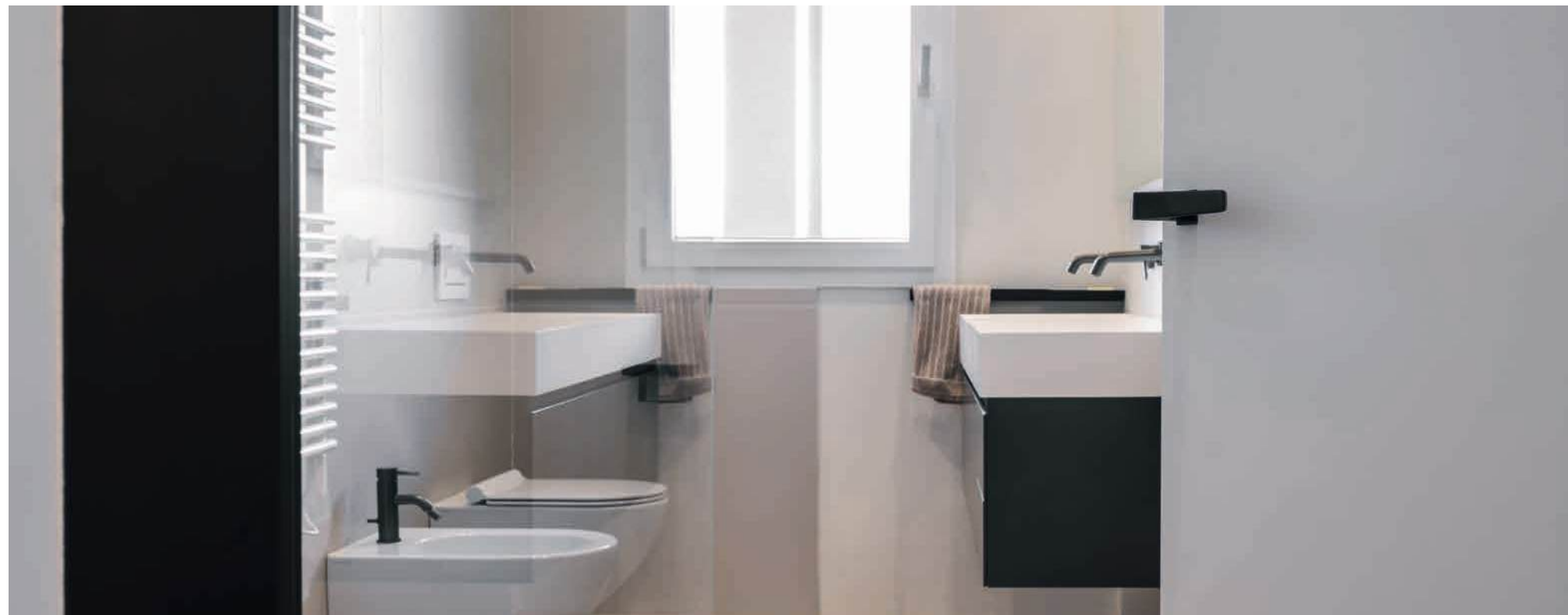
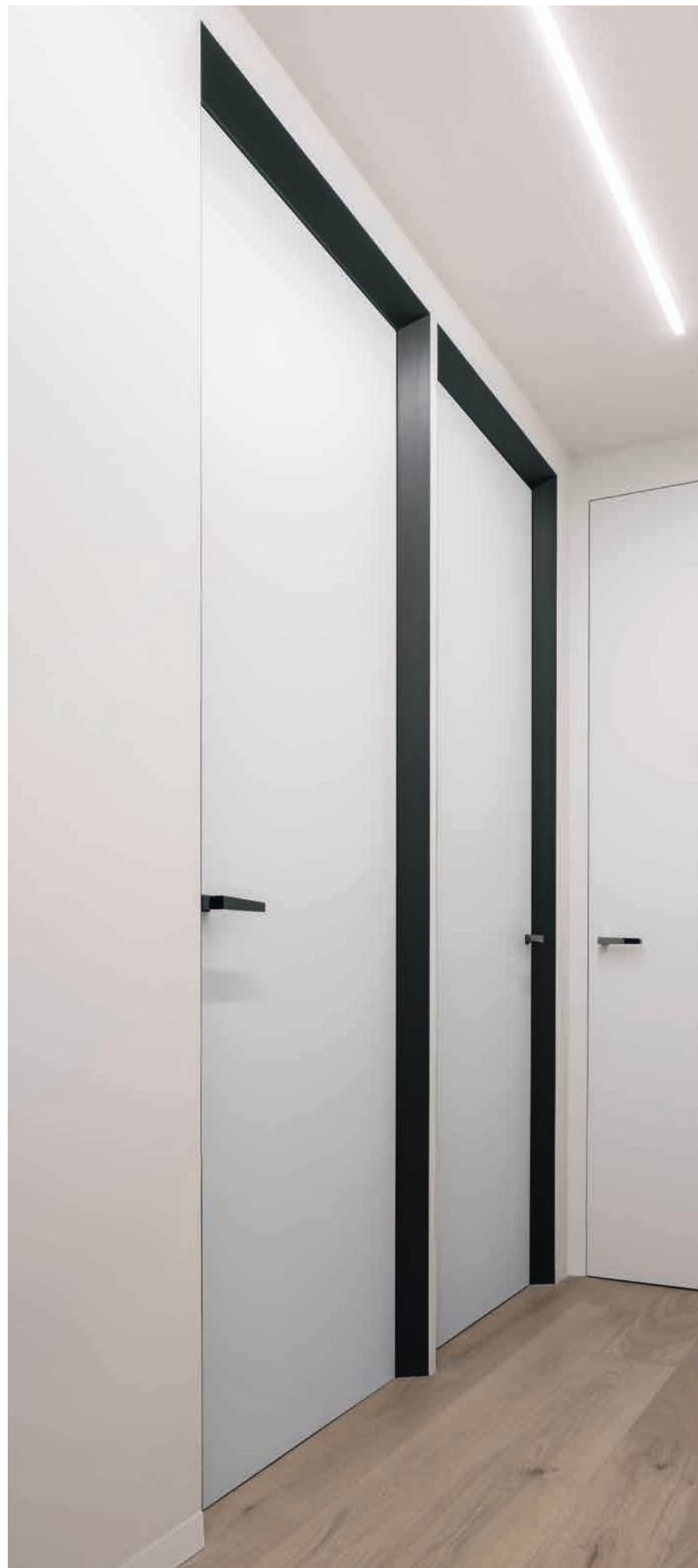
ARCHITECT: Francesco Valentini

LOCATION: Falconara Marittima (Italy)

YEAR: 2021

PRODUCTS: ECLISSE SYNTESIS LINE BATTENTE, ECLISSE SYNTESIS LINE, ECLISSE 40, ECLISSE DELTA







Just as it happens in large bustling cities, where the exuberant dynamism of the city itself penetrates and shapes the urban fabric and defines its character and function, so was the case for this building and its many lives. Its current soul is that of a private home that is also a studio, structured around the large work table that greets you upon entering and is the keystone of the whole layout. The style is a balanced mix of industrial and cosy flairs, the former given by the choice of colours and finishes for the floor, walls, and doors, with a rough texture that gives a very raw effect, and the latter given by the choice of materials such as natural wood and design items of furniture that make the place lived in and very personal.



.02 LOFT MILANO

PROJECT

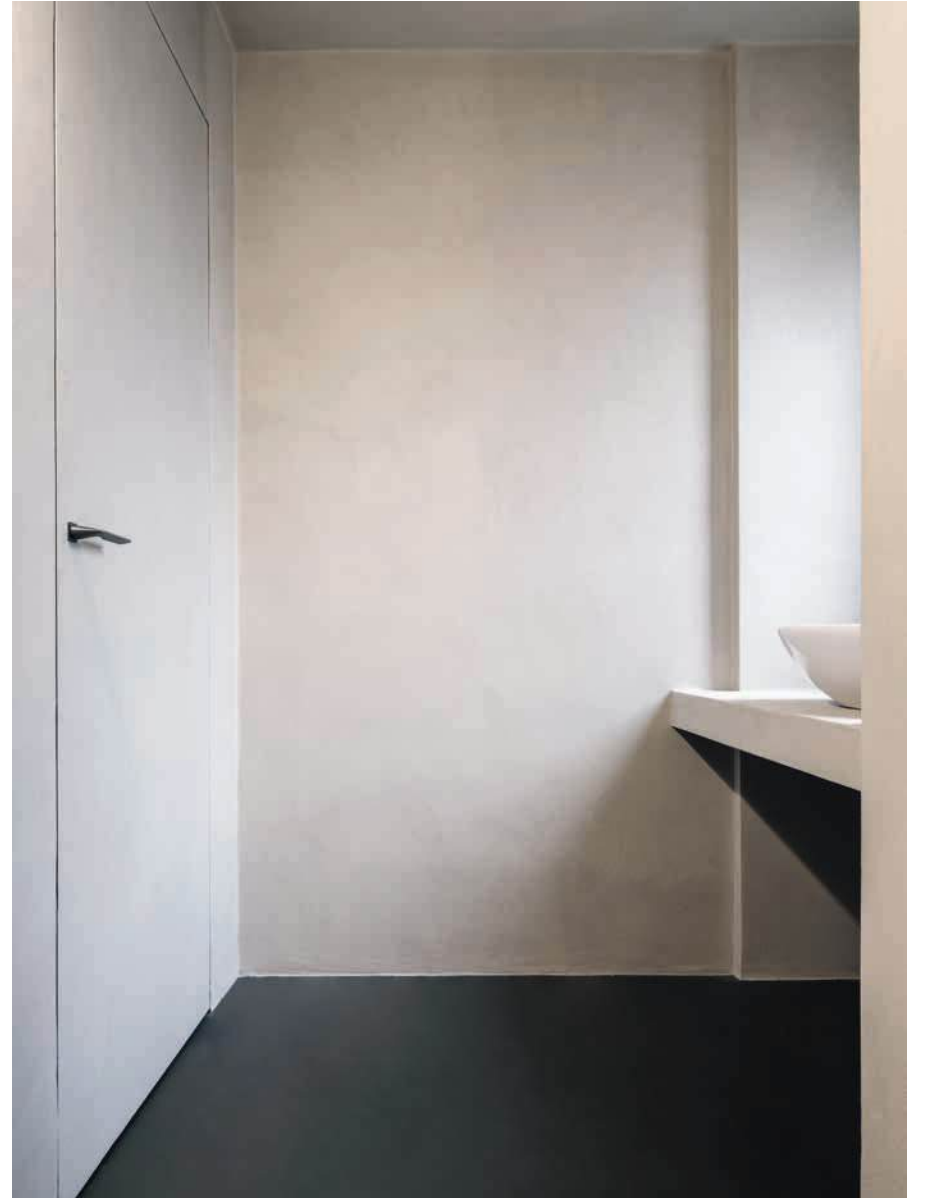
Once a shop, then a children's school, now a modern home-studio via an auction sale. A loft full of character, as much as history.

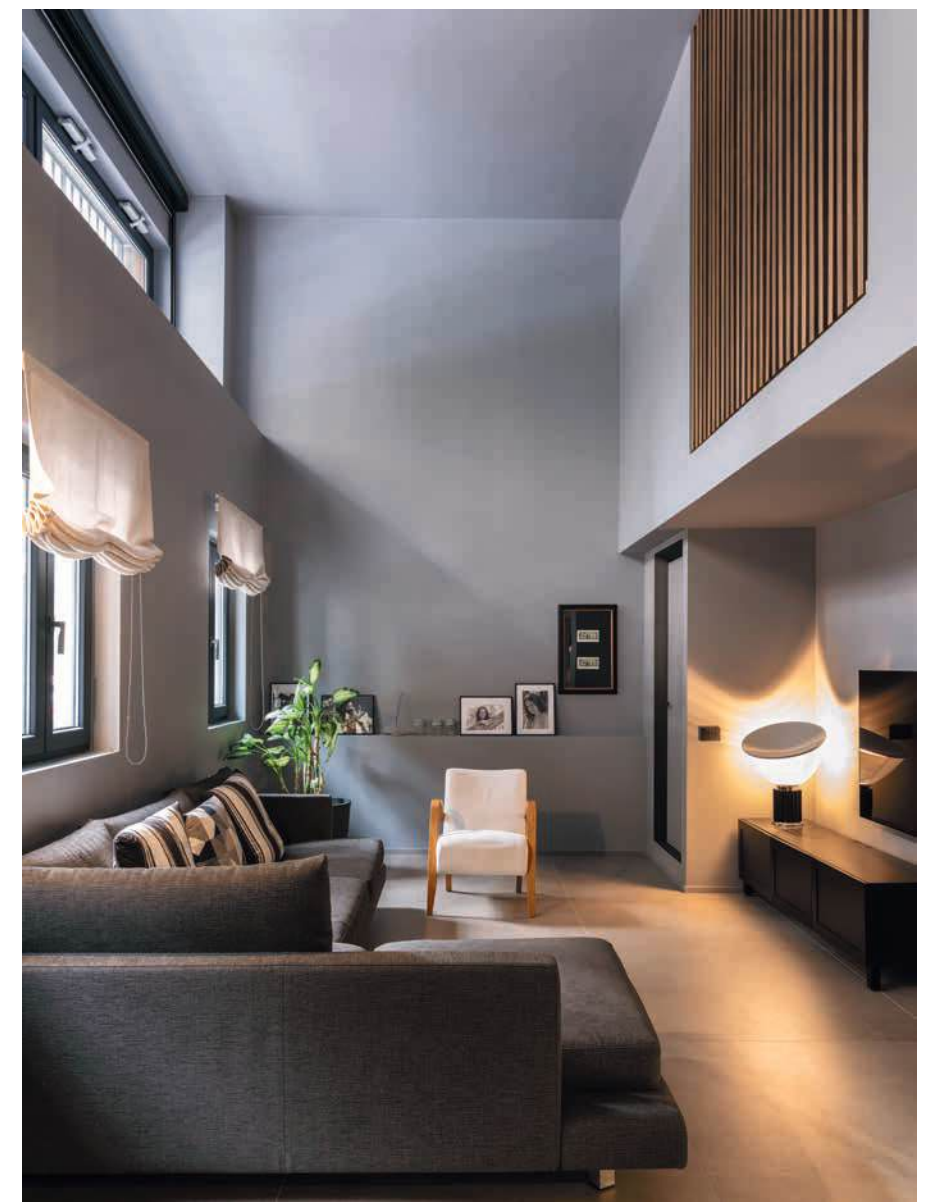
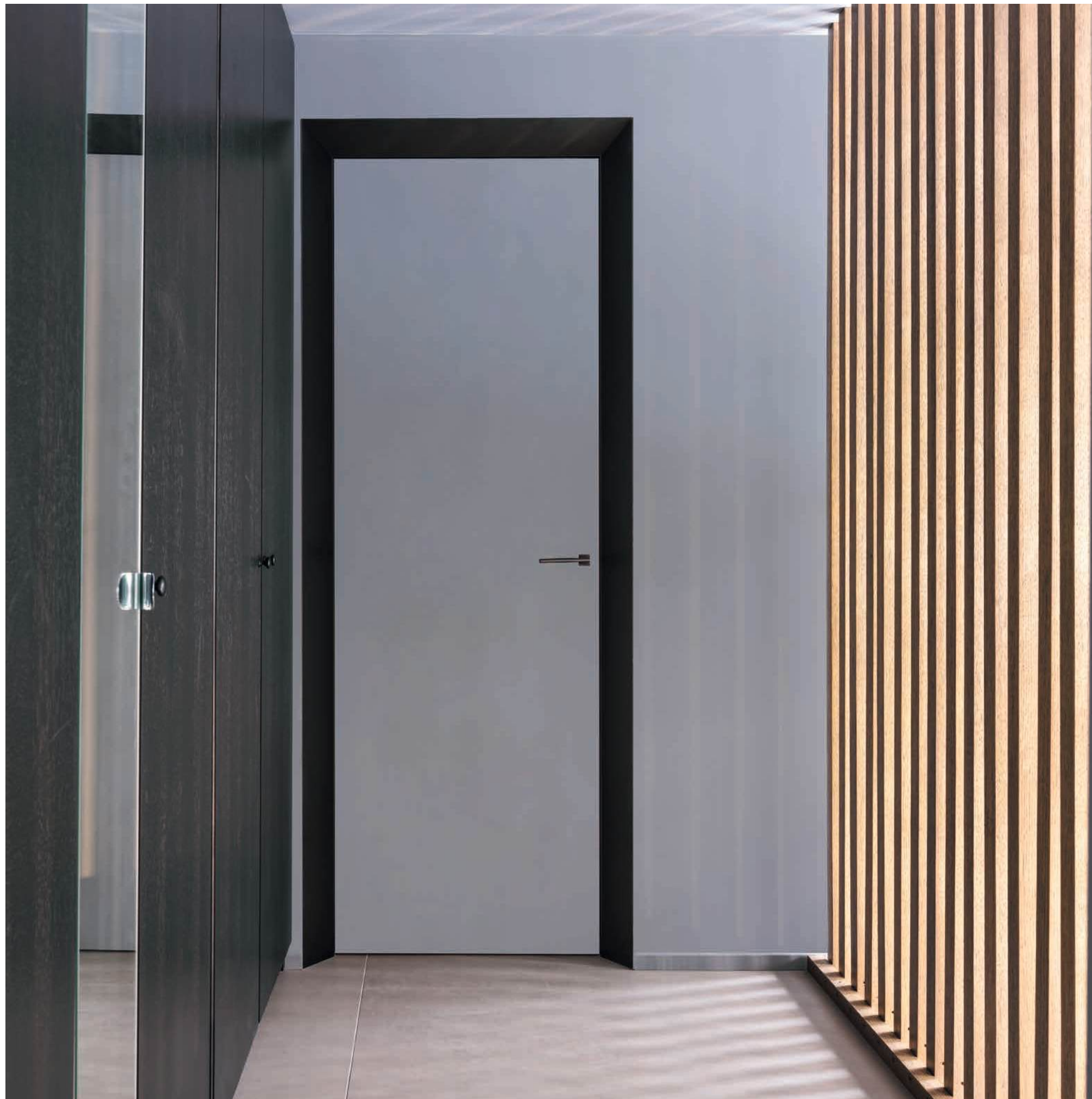
ARCHITECT: Luca Martini

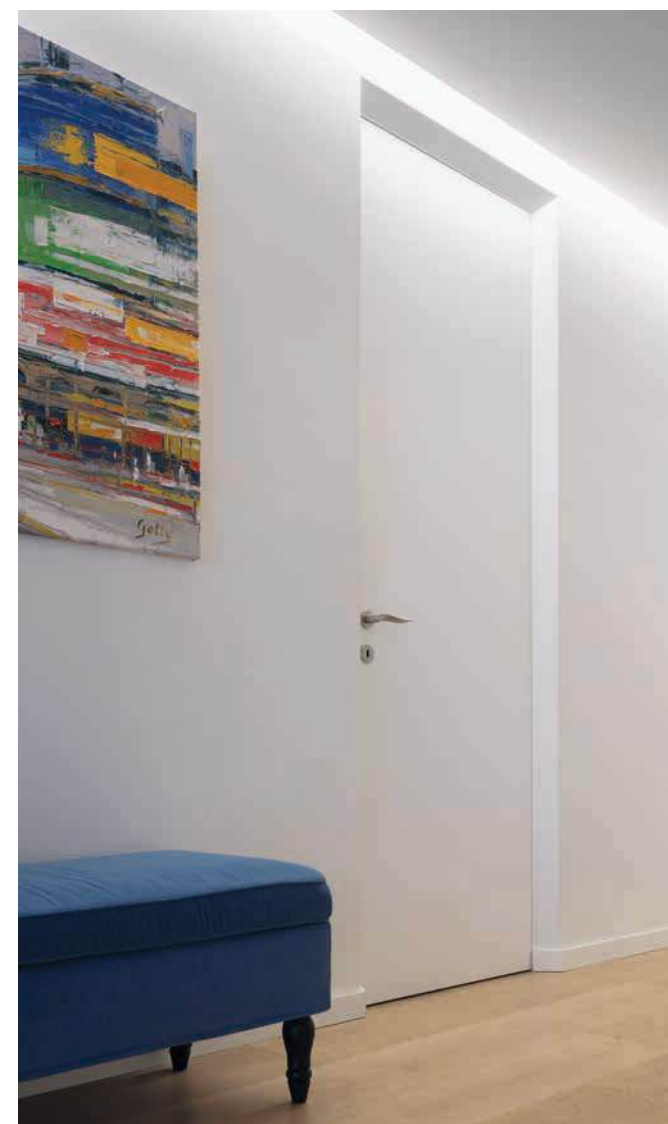
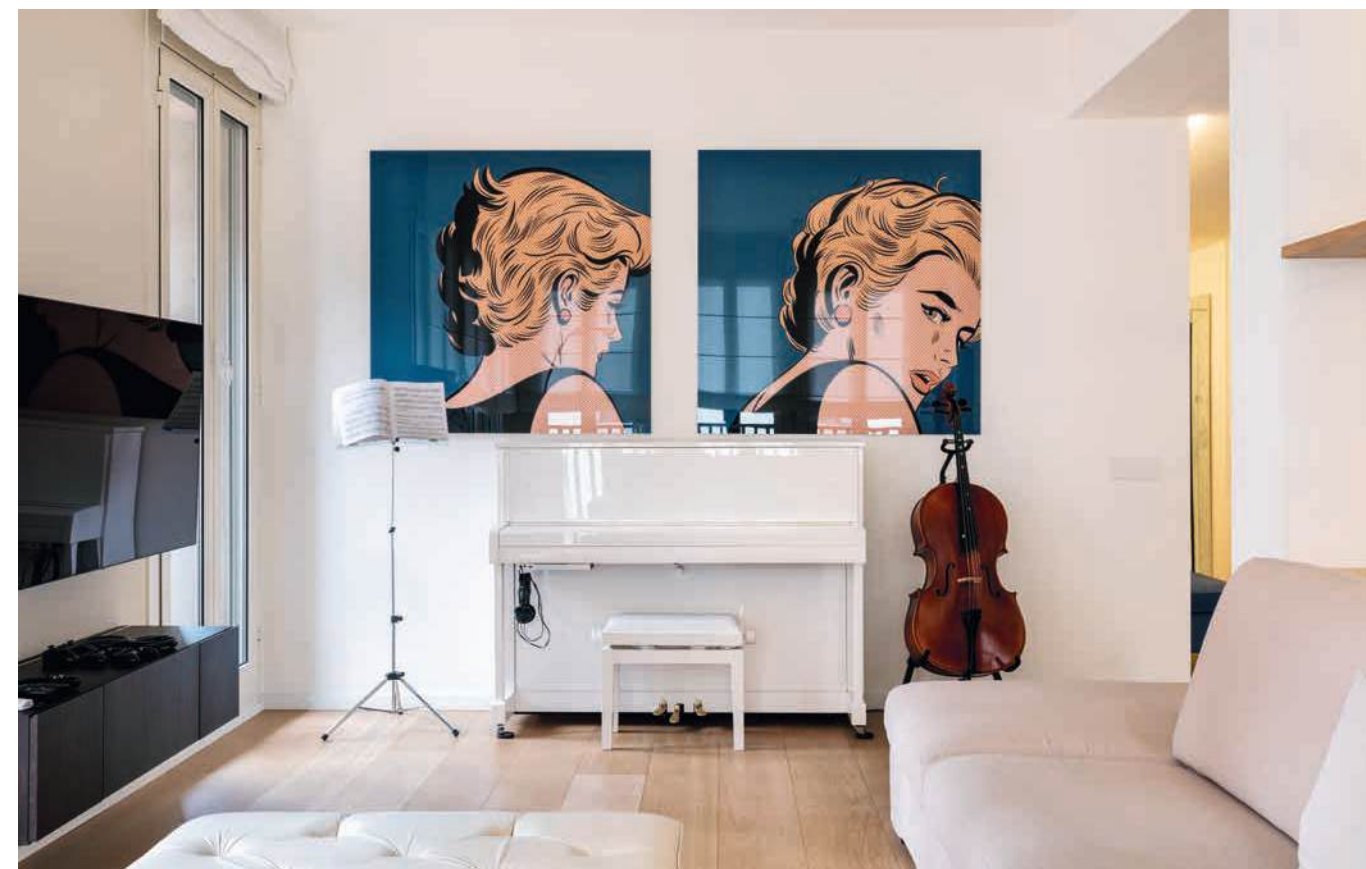
LOCATION: Milan (Italy)

YEAR: 2021

PRODUCTS: ECLISSE 40







After the first national lockdown in March 2020, this large family felt the need for a more spacious home, especially to give each of the children their own independence. Their quest led to the super quick renovation of this two-storey flat, the lower plan of which revolves around a scenographic spiral staircase that was made the main feature of the living area, now welcoming and full of light. The personality of each member of the family is expressed in the choice of colours and finishes in the different rooms and bathrooms, where the bright colours of the furnishing items match the vibes of the lively hues of the walls and the pattern of the wallpapers, as opposed to a background white that unifies the entire residence.



HOUSE MS8

.03

PROJECT

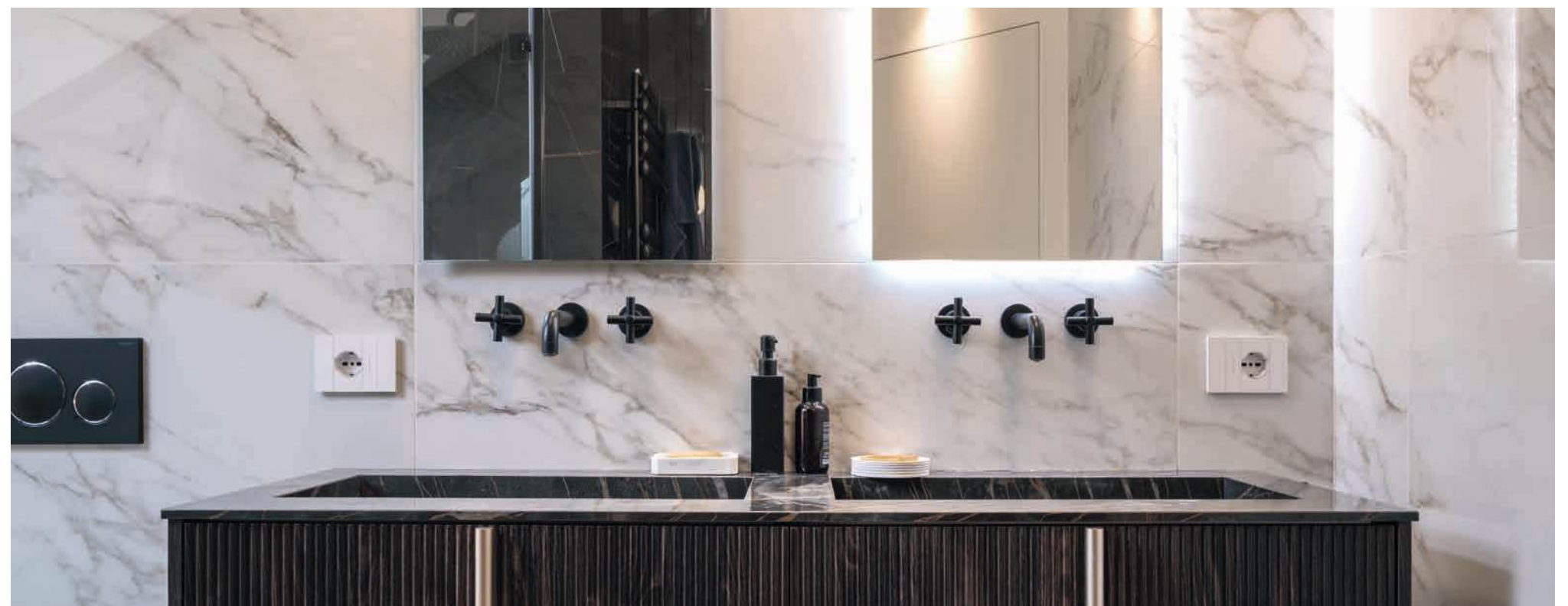
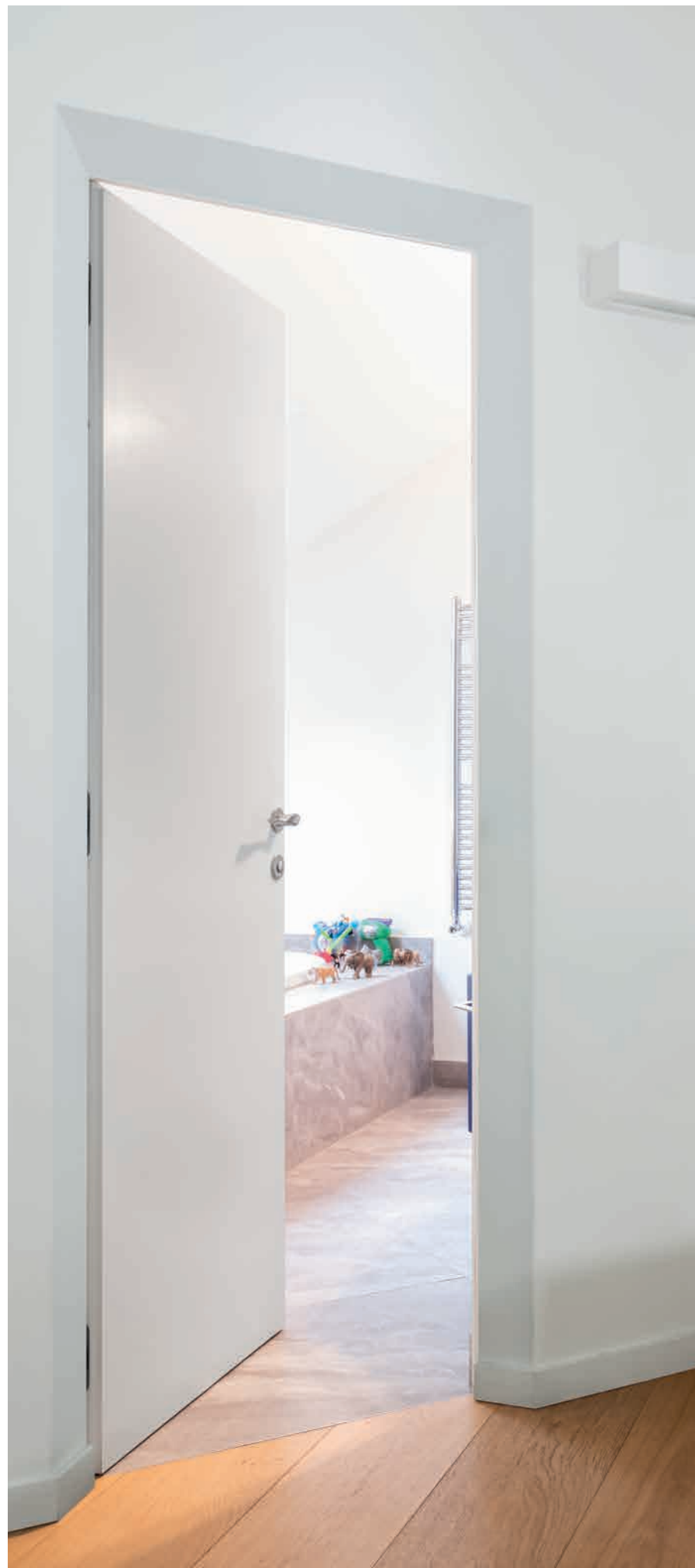
In the heart of Milan, a two-level penthouse was completely renovated to meet the needs of a young couple and their three exuberant kids.

ARCHITECT: Interno 3 Architetti

LOCATION: Milan (Italy)

YEAR: 2021

PRODUCTS: ECLISSE 40, ECLISSE SYNTESIS AREO







The main feature of this project is the drastic shift from the traditional distribution system, with a long corridor cutting lengthwise through the flat, to a new interpretation of functional areas. The new layout abandons the physical separation of spaces in favour of a visual partition, defined by volumes and finishes. The private, more intimate part of the house is protected from the living area by a jagged wall, which has its geometric origin in the angled wall of the entrance door. The overall trait d'union is in the texture and neutral colour of the finishing materials of the walls and ceilings and in the uniform tiled flooring. The star of the project is the mirrored pillar, which separates and connects at the same time.



.04 HOUSE FV

PROJECT

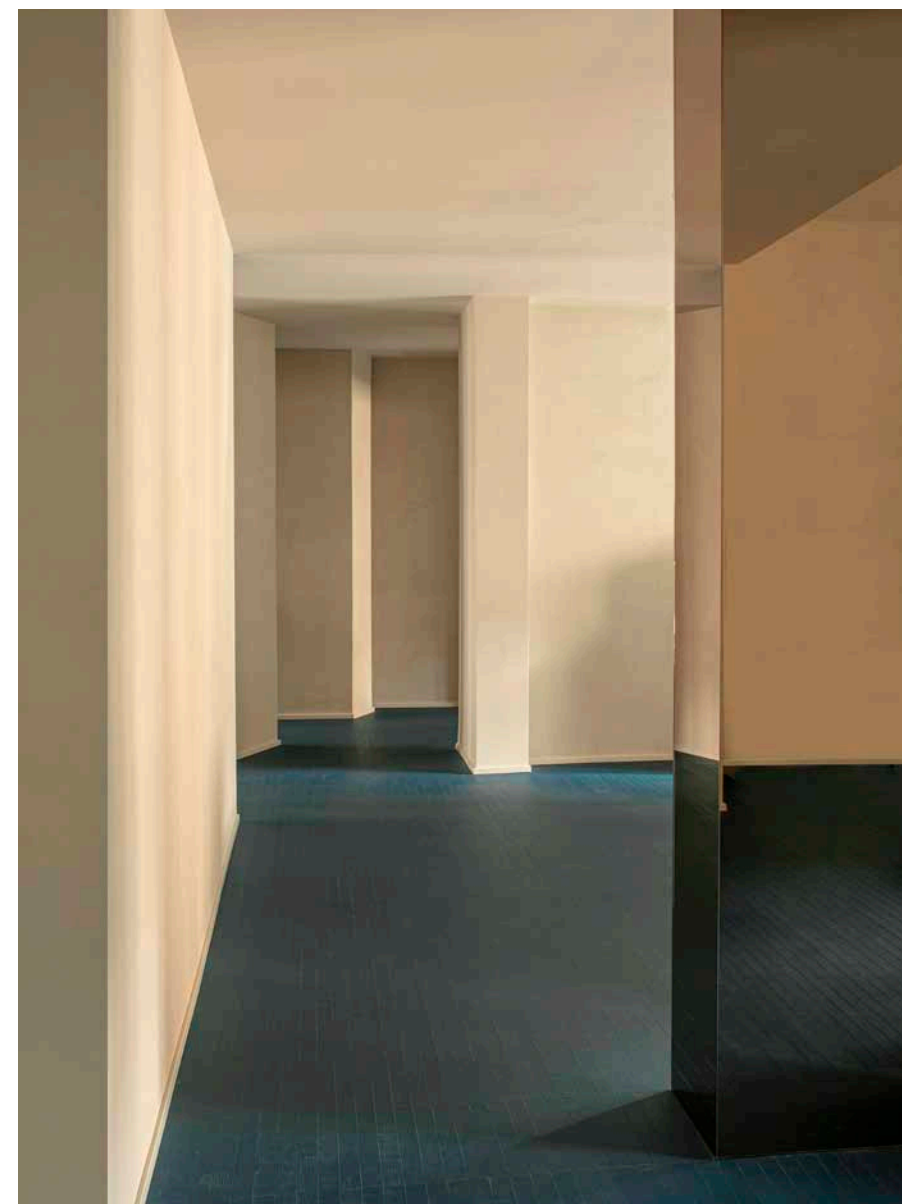
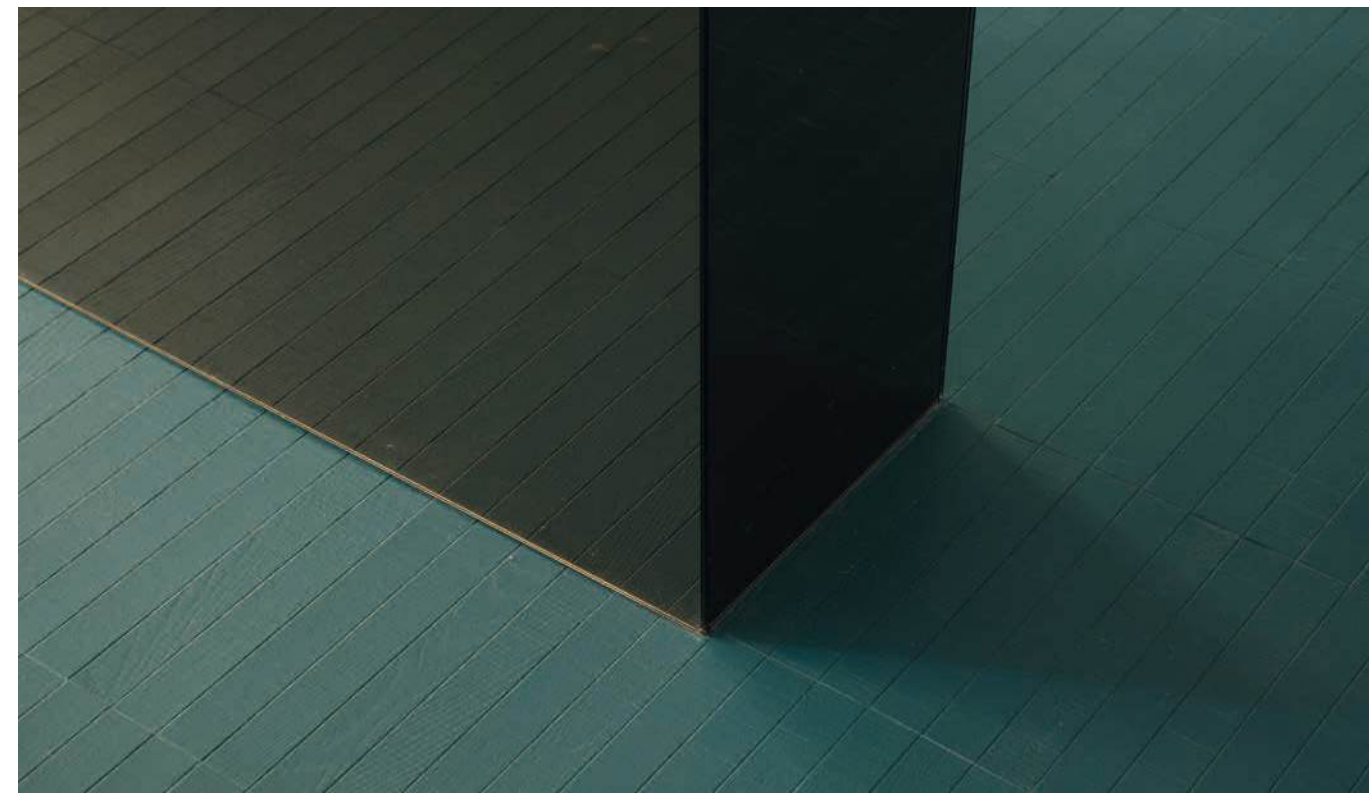
Bold stylistic choices and a holistic approach to design transform an anonymous 1970s flat into the warm nest of a young Sicilian woman with lots of personality.

ARCHITECT: Luca Grammatta , Alberto Giambruno - UAIG_architettura

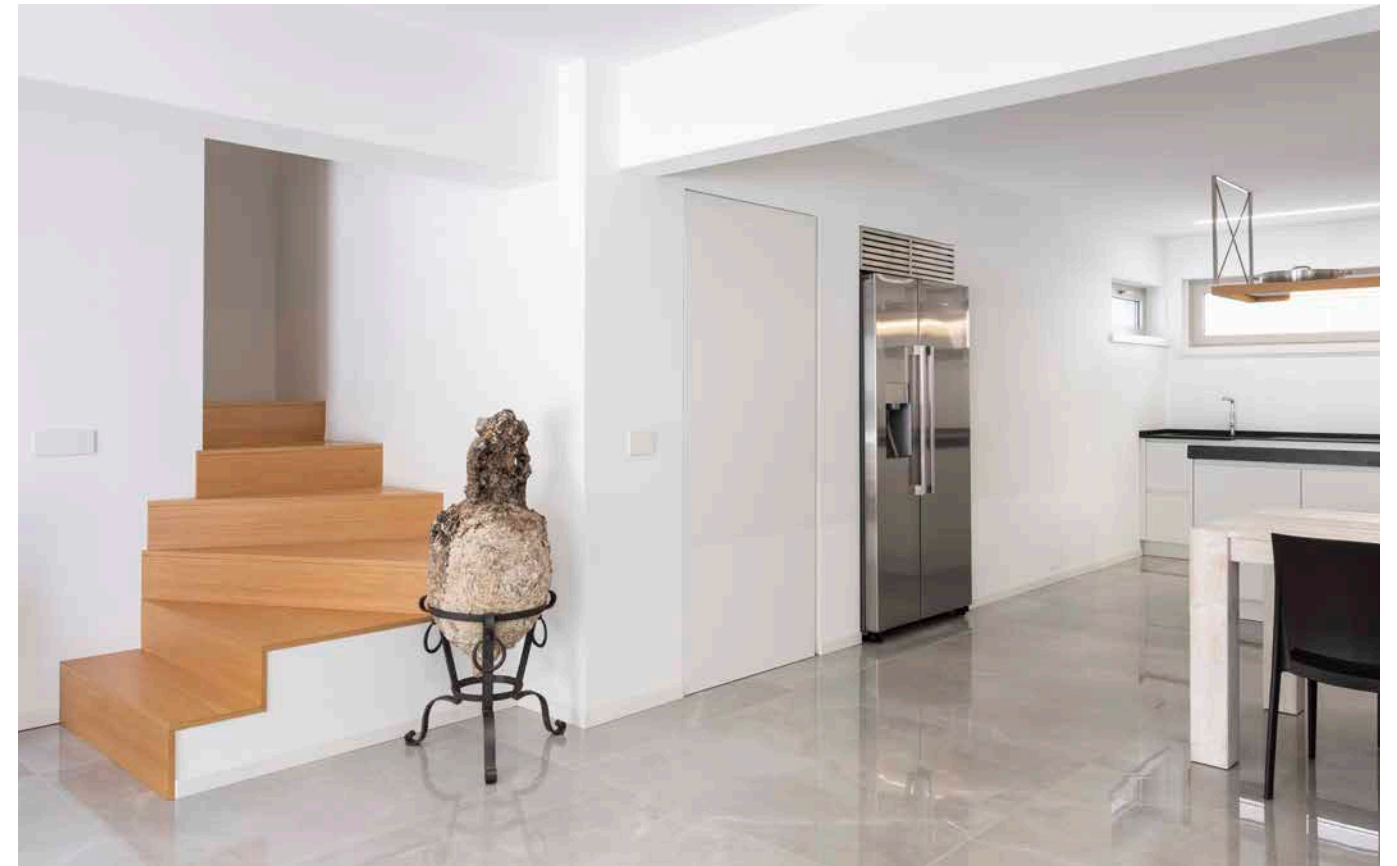
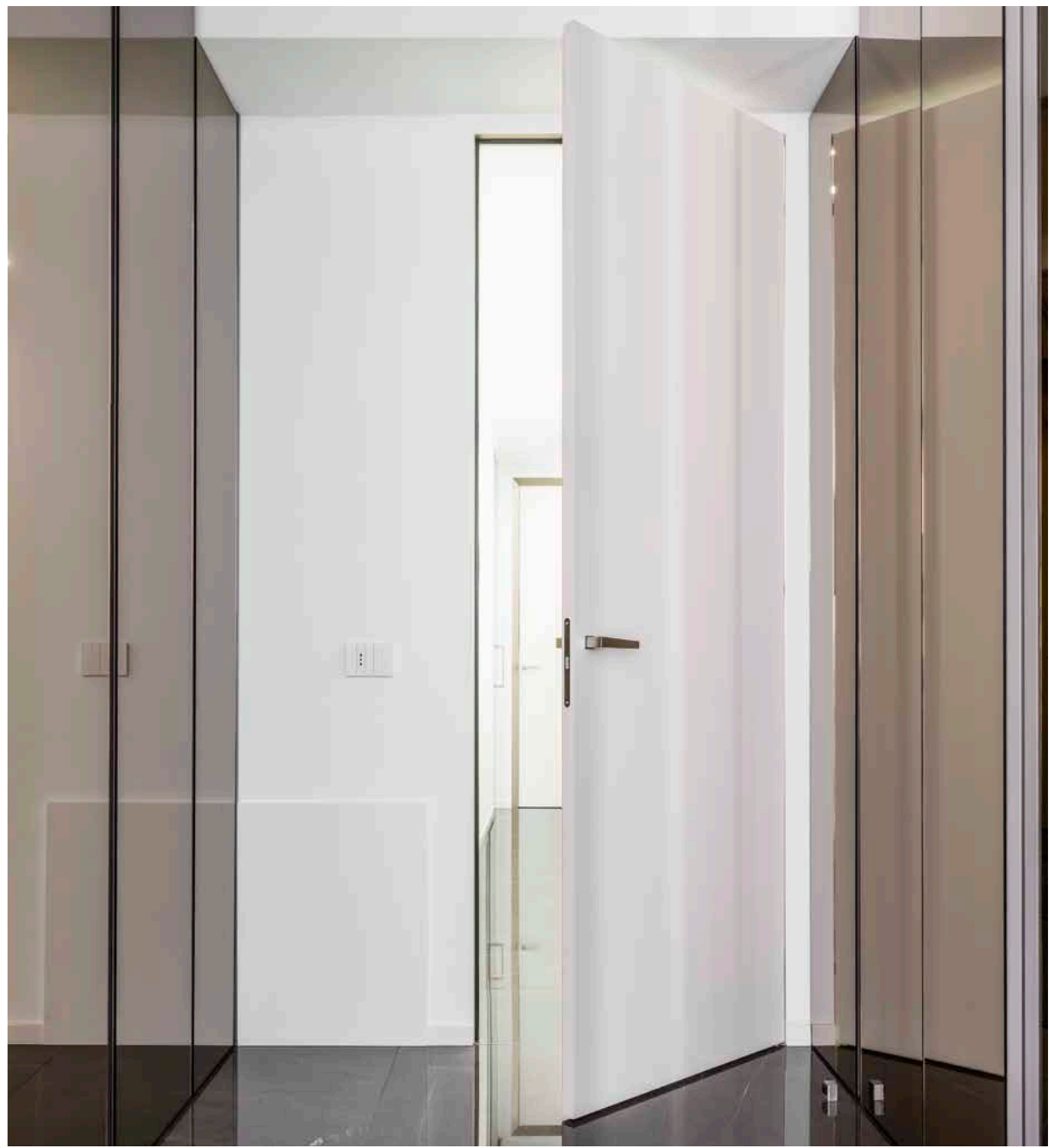
LOCATION: Palermo (Italy)

YEAR: 2023

PRODUCTS: ECLISSE SYNTESIS LINE, ECLISSE SYNTESIS LINE BATTENTE







The villa is named after the Passetto district, a picturesque quarter in the city of Ancona, central Italy, which is best known for its iconic coastline, high above the sea, and the rocky beach bearing the same name.

The renovation of an old residence focused on redesigning the layout of the interiors, to enhance brightness and allow for the smooth and unhindered transition between different areas.

The colour palette plays on the sharp contrast between very few fundamental shades: black, white and the warm tones of light wood and gold, which are best emphasised in the cladding of the staircase and the splayed profiles that frame the doors in the night area.



.05 VILLA ESSE

PROJECT

A seaside villa that flaunts a refined, contemporary style, perfectly in harmony with an exclusive setting.

ARCHITECT: Valter Pecora

LOCATION: Ancona (Italy)

YEAR: 2022

PRODUCTS: ECLISSE 40







This restoration project celebrates the past through unique architectural details, enhancing the history of a dwelling that was once owned by the Brandolini Counts. The façade is in fact red, the colour that the lords of the valley wanted for the farmers' houses, and is decorated with the characteristic white details and the Counts' coat of arms. While preserving the original structure, the project respectfully integrates contemporary elements that meet the needs of modern living and current energy efficiency standards. The only element of clear detachment is a terrace created through a squared corten intrados on the first floor, which opens onto the hills and gives plenty of natural light to the living area.



.06

HOUSE PILAT

PROJECT

Amidst the hills of Prosecco DOCG, in the Veneto region, the renovation of a family home marries contemporary solutions and a centuries-old tradition of colours, coats of arms and nobility.

ARCHITECT: Giansilvio Girardi

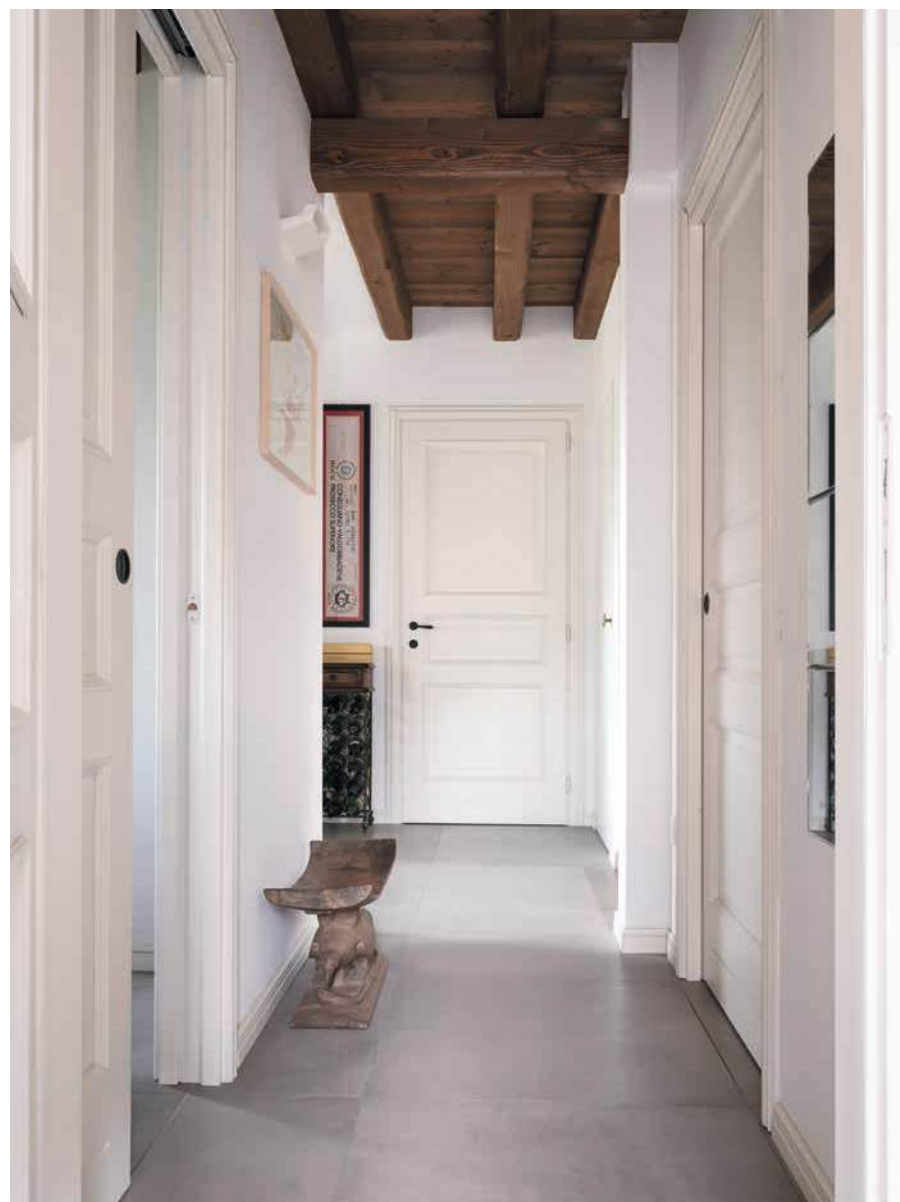
LOCATION: Treviso (Italy)

YEAR: 2024

PRODUCTS: ECLISSE UNICO, ECLISSE SYNTESIS LINE BATTENTE









The result of a conscious choice by the client, designer, and builder, this newly built villa employed a range of techniques and systems to achieve maximum energy efficiency. The structure consumes very little, relying on self-generated energy from renewable sources such as photovoltaic panels and geothermal energy, while careful window orientation, shading systems, and other architectural details help the building minimize energy consumption, by maximizing sun exposure in winter and reducing the need for AC in summer. In addition to this, the residence stands were an old house was demolished, to avoid the use of virgin soil and thus adhere to the latest trends towards the regeneration and revitalization of existing urban areas.



.07 VILLA NOAL

PROJECT

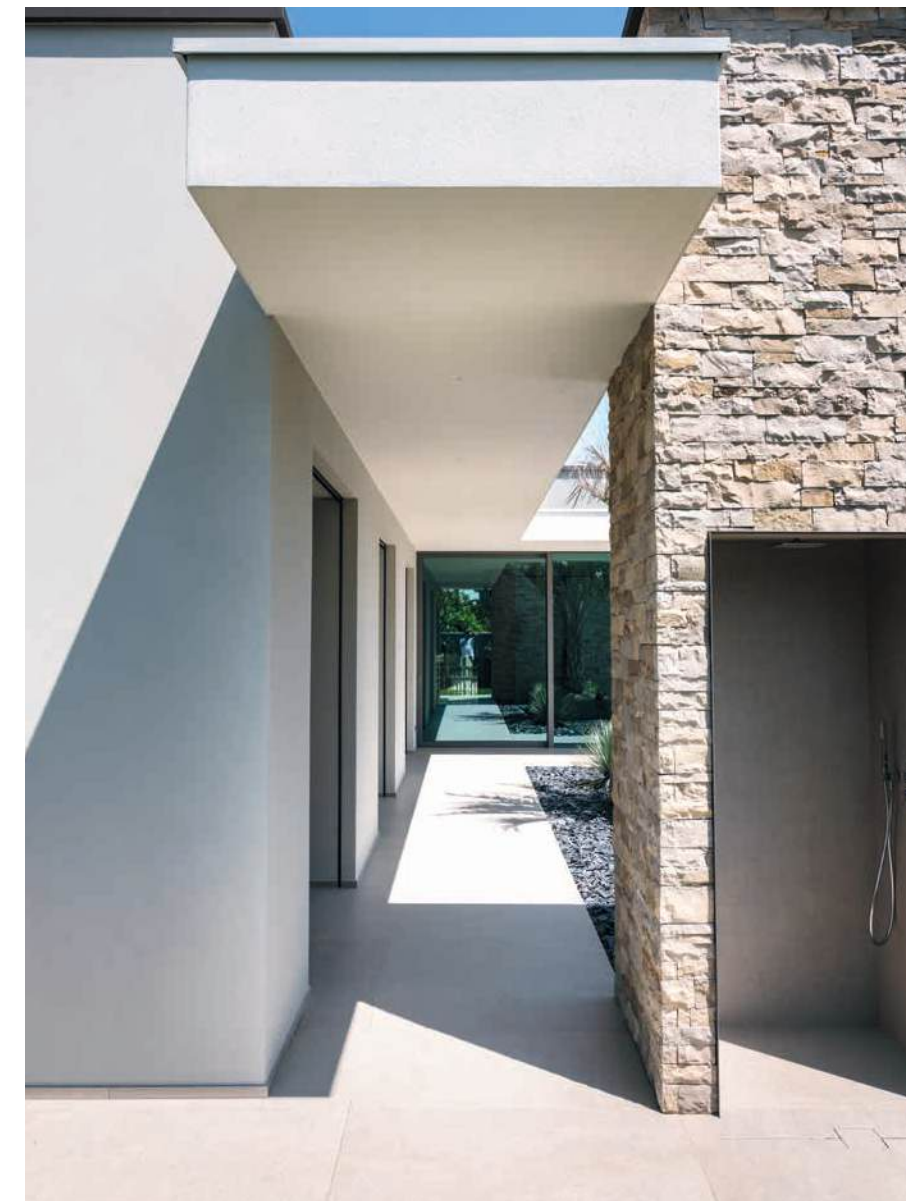
A true example of nZeb building, this project interprets highly energy-efficient solutions to offer all the comforts of a modern luxury home.

ARCHITECT: Andrea Benedetti

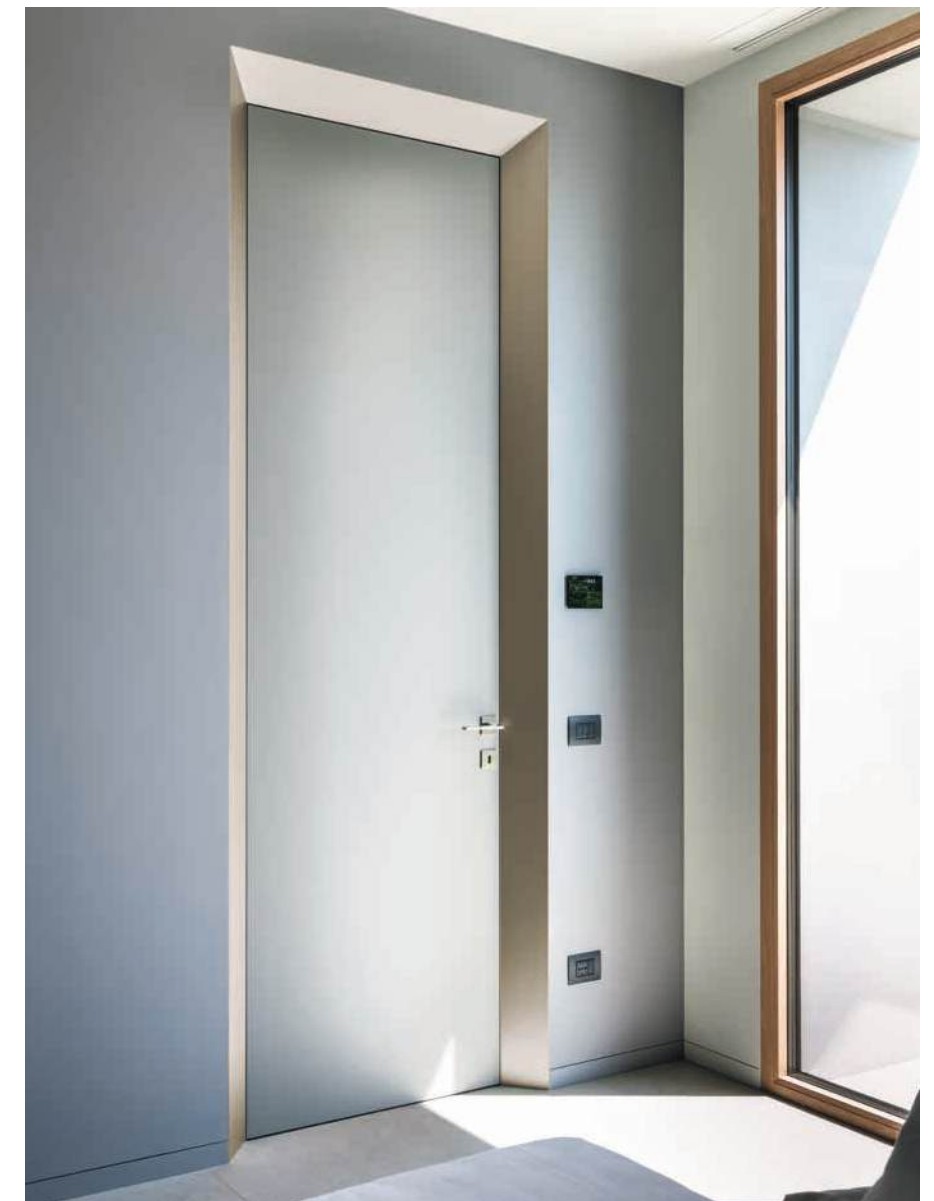
LOCATION: Brescia (Italy)

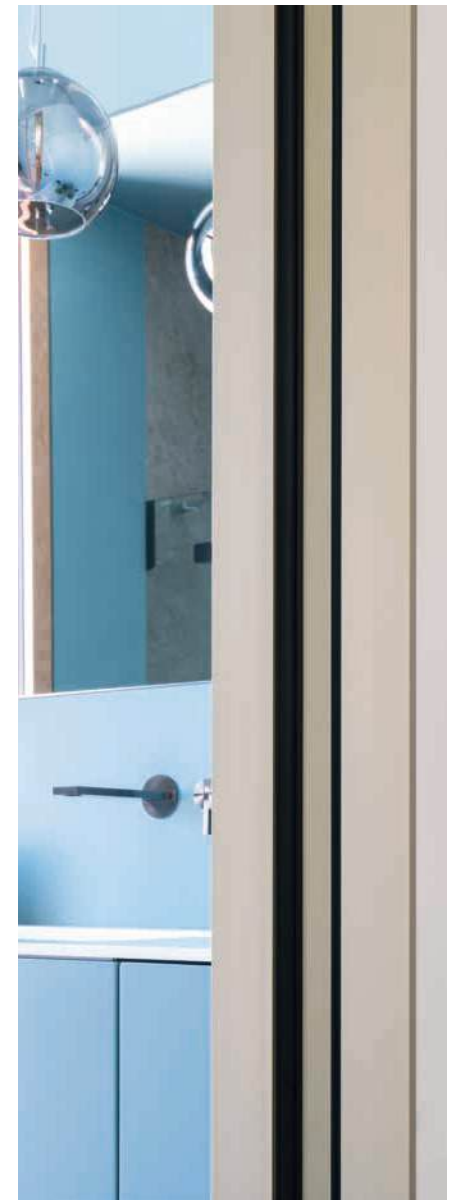
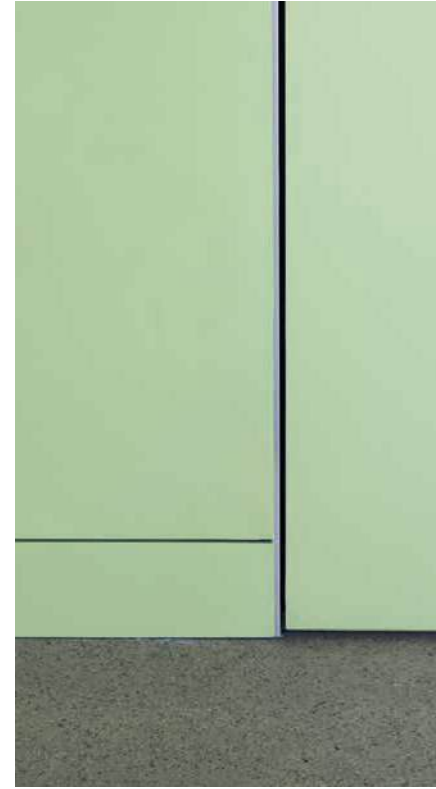
YEAR: 2023

PRODUCTS: ECLISSE 40, ECLISSE SYNTESIS LINE, ECLISSE SYNTESIS BATTISCOPA, ECLISSE MIMESI













This new office building aimed to replace the old spaces, which were becoming obsolete, and to create a new office space aesthetically aligned with the company's values, providing a comfortable environment to maximise the productivity and participation of individuals. Emphasis was placed on involving employees in the design phase, understanding their needs and turning every piece of information gathered into a design action. This strategy led to the creation of welcoming spaces tailored to the individual. The design is characterised by soft shapes, based on neuroarchitecture, to encourage concentration and a positive approach to work, while the abundance of flora contributes to psychophysical comfort.



.08 DeFAVERI SEAT

PROJECT

The historical firm, based in the heart of the Veneto region and now part of ECLISSE company, inaugurated its new executive offices showcasing stylish pocket and swing solutions.

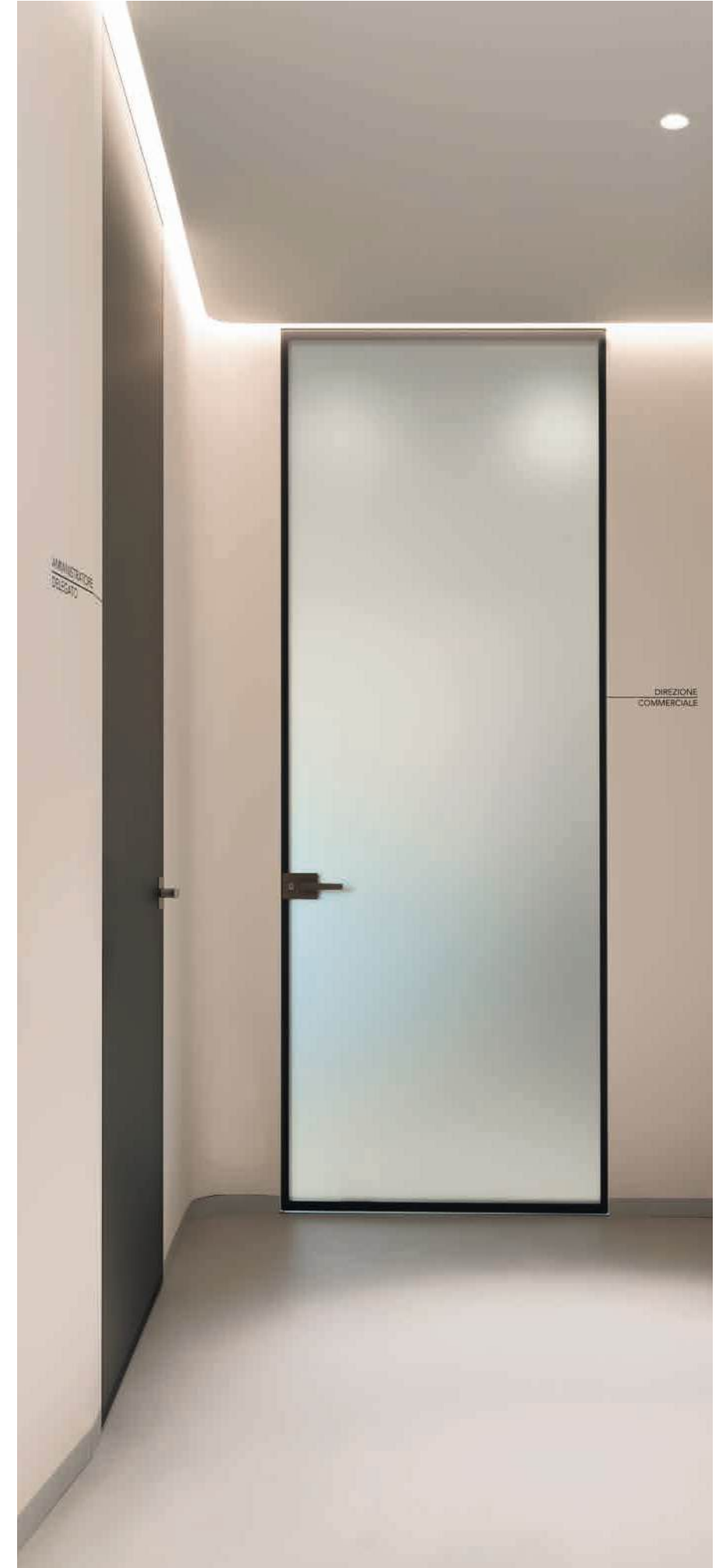
ARCHITECT: Studio Andreani

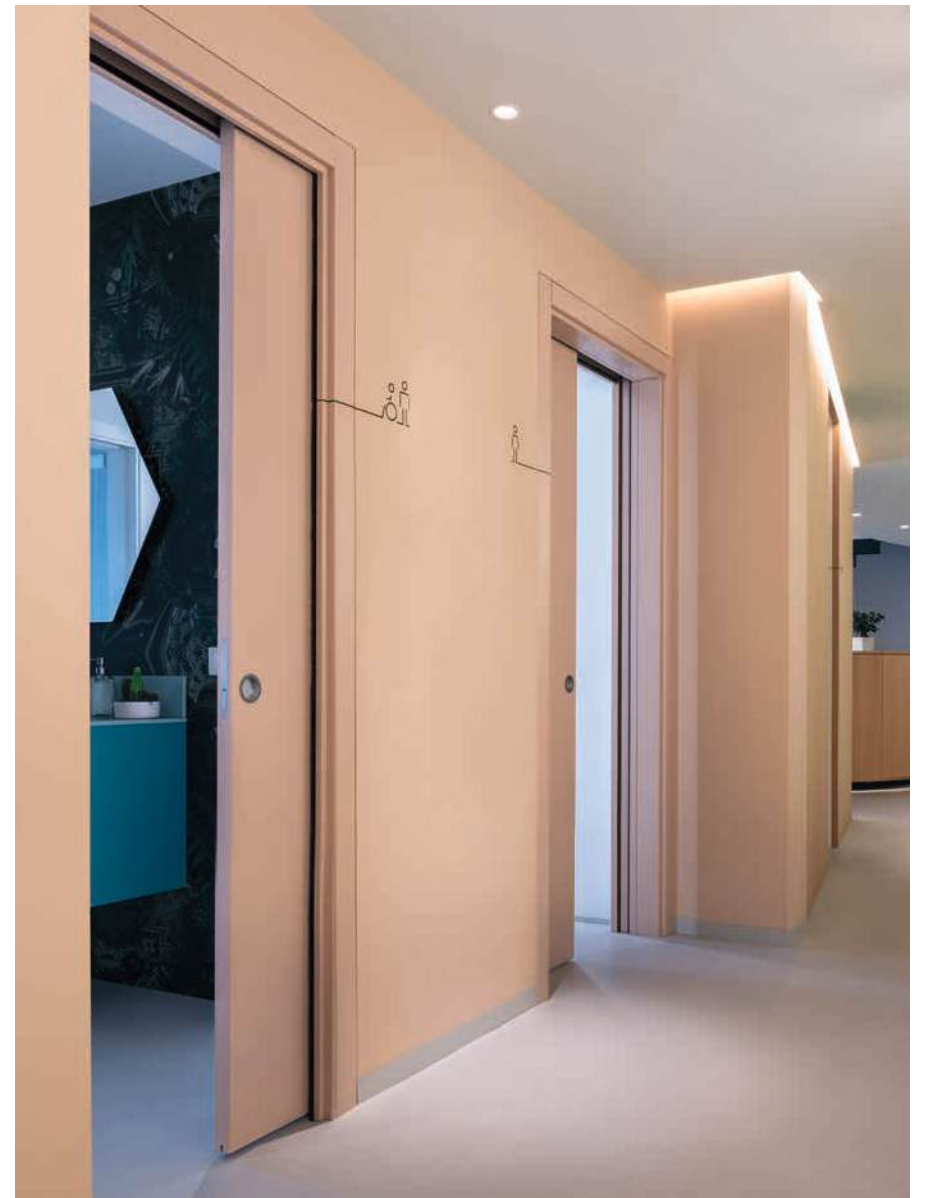
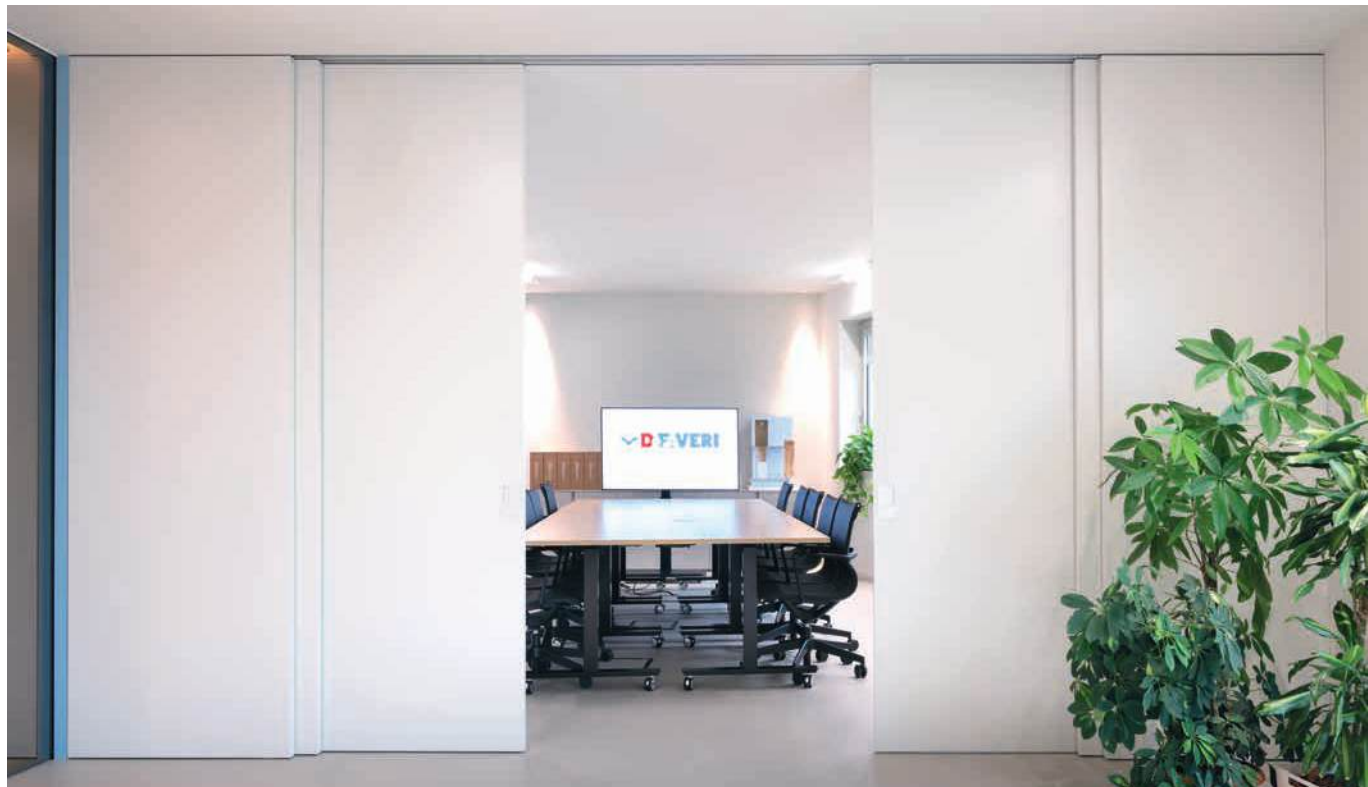
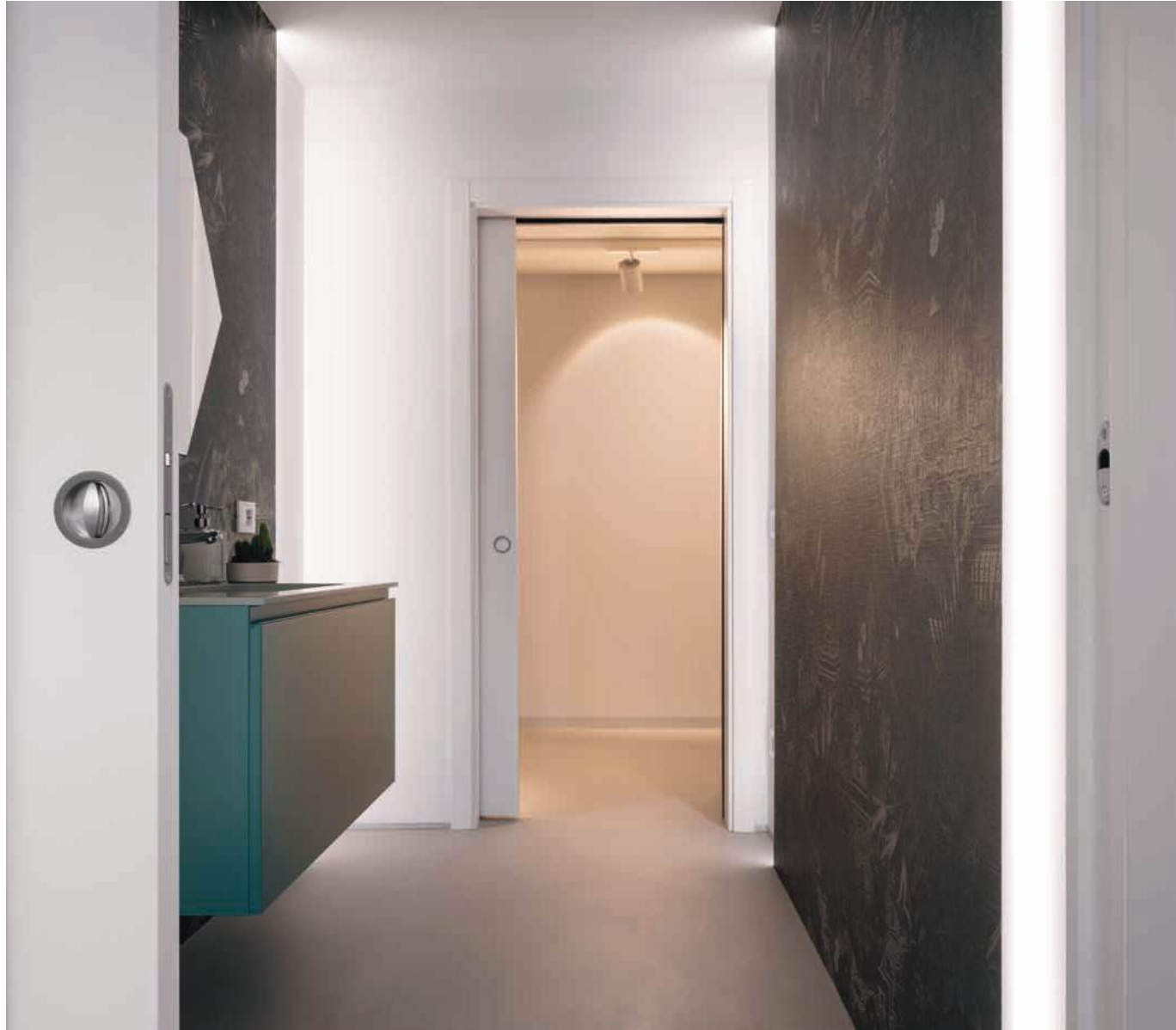
LOCATION: Refrontolo (Italy)

YEAR: 2023

PRODUCTS: ECLISSE UNICO, ECLISSE SYNTESIS LINE, ECLISSE SYNTESIS LINE BATTENTE







FEATURED PRODUCTS

ECLISSE UNICO

ECLISSE Classic Collection



PRODUCT:

Sliding pocket door system with jambs and architraves for single wooden and glass doors.

VERSIONS:

Stud wall / Solid wall

ACCESSORIES:

Soft closer
Self-closing system
Motorisation
ECLISSE Push&Pull C
Acoustic KIT for soundproofing

PRODUCT VARIANTS:

ECLISSE LUCE - wiring-ready
ECLISSE HOIST - for rail lifting devices

ECLISSE SYNTESIS LINE

ECLISSE Syntesis Collection



PRODUCT:

Flush sliding pocket door system without jambs and architraves for single wooden and glass doors.

VERSIONS:

Stud wall / Solid wall

ACCESSORIES:

Soft closer
ECLISSE Push&Pull S
ECLISSE Vitro - for glass doors
Acoustic KIT for soundproofing

PRODUCT VARIANTS:

ECLISSE SYNTESIS LUCE - wiring-ready

ECLISSE SYNTESIS LINE BATTENTE

ECLISSE Syntesis Collection



PRODUCT:

Frame and door set* for flush single and double hinged door without jambs and architrave.
Also suitable for glass doors.

VERSIONS:

Push door / Pull door
With header / Without header**
Universal frame for stud and solid wall

ACCESSORIES:

Door closer
Door-closing hinge
Acoustic KIT for soundproofing

PRODUCT VARIANTS:

Single door frame with sloping header
Single door frame with provision for electric striker

* Door panels are optional
** Double door frame only available with header

ECLISSE 40

ECLISSE 40 Collection



PRODUCT:

Frame and door set* for splayed single and double hinged door flush on the opposite side without jambs and architrave.
Also suitable for glass doors.

VERSIONS:

Push door / Pull door
With header / Without header**
Universal frame for stud and solid wall

ACCESSORIES:

Door-closing hinge

PRODUCT VARIANTS:

Painted in various colours
Primer-coated (paintable)

* Door panels are optional
** Double door frame only available with header

FEATURED PRODUCTS

ECLISSE SYNTESIS AREO

ECLISSE Syntesis Collection



PRODUCT:

Flush wall closures for built-in closets, credenzas, storage closets, wall niches and equipped under-stair closets.

VERSIONS:

Universal frame for stud and solid wall

ACCESSORIES:

Cover
Hardware for shelf supports

PRODUCT VARIANTS:

Single or double door with side opening and horizontal or sloping header
Top-hung or bottom-hinged flap panel
Bifold and double bifold door
Modular (up to 8 side-by-side doors)

ECLISSE DELTA

Baseboards



PRODUCT:

Inclined baseboard.

VERSIONS:

H 50 mm
H 70 mm
Universal frame for stud and solid wall

FINISHES:

Primer-coated (paintable)
White RAL 9010
Champagne
Bronze
Tobacco

PRODUCT VARIANTS:

With polyhedral terminals
With linear terminals

ECLISSE SYNTESIS BATTISCOPA

ECLISSE Syntesis Collection



PRODUCT:

Aluminium profile for flush baseboard.

VERSIONS:

Stud wall / Solid wall

WOODEN BAR FINISHES:

Primer-coated (paintable)
Lacquered white RAL 9010
Lacquered in other RAL colours
Natural ash
Open pore lacquered white RAL 9010 ash
Natural oak
White ash

ECLISSE MIMESI

Accessories



PRODUCT:

Aluminium coating profile for flush pocket doors. The profile is designed to allow flush pocket doors of the ECLISSE Syntesis Collection to match with an ECLISSE 40 frame installed in the same room and to create a harmonious, consistent interior.

FINISHES:

White RAL 9010
Champagne
Bronze
Tobacco

CREDITS

OUR SINCERE THANKS TO

Ph. Enrico Dal Zotto
enricodalzotto.it
for the images of
ATTICO M+T
LOFT MILANO
MS8
VILLA ESSE
HOUSE PILAT
VILLA NOAL
DeFAVERI OFFICE

Ph. Peter Molloy
petermolloyphotography.com
for the images of
HOUSE FV

All architects and designers
for their creativity.

All the owners of the various locations
for their cooperation.

GET FEATURED ON VISIONS!

Would you like to see your latest project
in the next VISIONS?
Get in touch with us and tell us more
about it.

We would love to receive a few details
about yourself, a description of the project,
floor plans and drawings.
Which ECLISSE products did you choose
and why?

Contact email:
marketing@eclisse.it

ECLISSE WORLD

OUR SUBSIDIARIES

- ECLISSE (Italia - HQ)
- ECLISSE Brasil
- ECLISSE Česká Republika
- ECLISSE Deutschland
- ECLISSE España
- ECLISSE France
- ECLISSE Österreich
- ECLISSE Polska
- ECLISSE România
- ECLISSE Slovenská Republika
- ECLISSE United Kingdom

OUR OFFICIAL DISTRIBUTORS ARE IN

- Belgium
- Bielorussia
- Denmark
- Estonia
- Finland
- Hungary
- India
- Latvia
- Lithuania
- Luxembourg
- Morocco
- Netherlands
- Russia
- Tunisia
- Serbia
- Sweden
- Switzerland
- Turkey
- USA



Find your nearest
distributor
www.eclisse.com



ECLISSE s.r.l. • Via Giovanni Pascoli, 7 - 31053 Pieve di Soligo TV - ITALY
Tel. +39 0438 985749 • international.sales@eclisse.it • www.eclisse.com