

CATALOGUE





**True change comes from the
desire to Look Further.**

*"I have always wanted to create a
pocket door system which is easy
to install and will last forever.*

*I am inspired by the idea of
constantly improving the
performance of this product,
because I want to satisfy everyone
who sells it, installs it and uses it.*

*This is what drives me and enables
me to always Look Further."*

A handwritten signature in blue ink that reads 'Luigi De Faveri'.

Luigi De Faveri
Founder of ECLISSE



OUR *FUTURE* IS MADE OF *PEOPLE*

FOR MORE THAN 35 YEARS WE HAVE BEEN
LOOKING FURTHER WITH YOU

At ECLISSE we have a strong orientation towards people, innovation and continuous improvement.

Ours is a story of listening and study, of continuous work on the product, of relentless pursuit of quality, in order to acquire more and more expertise in the field.

We look beyond the state of the art to imagine the innovation no one has thought of yet, to generate the next generation of technologies that will improve the functionality and aesthetics of our products.

We are driven and inspired by the dreaming ability of designers, architects and individuals who love interior design, but also by the technical needs of builders and installers. The challenges presented by their needs and visions are the driving force behind our growth.

Looking Futher is the reflection of our philosophy:

a promise we repeat every day, a commitment to see what others do not see, the meticulous attention to detail, the desire to take nothing for granted.

The synthesis of our work, what differentiates us.

This is the essence of ECLISSE.

TOWARDS *PERFECTION*

POCKET DOOR SYSTEMS DESIGNED TO
WORK PERFECTLY

The hallmark of our products is uncompromisingly high quality.

We maintain a constant contact with users, designers and installers, and we use their insights to develop new ideas and extraordinary solutions.

Our aim is to develop and manufacture sliding pocket door systems that are easy to install, functionally flawless and easy to maintain.

We set out to revolutionise the concept of the sliding pocket door system and so enable any type of frame to be hidden.

We also decided to redefine the role of the frame for flush hinged doors.

Choosing ECLISSE is to choose a reliable, sturdy, innovative product.

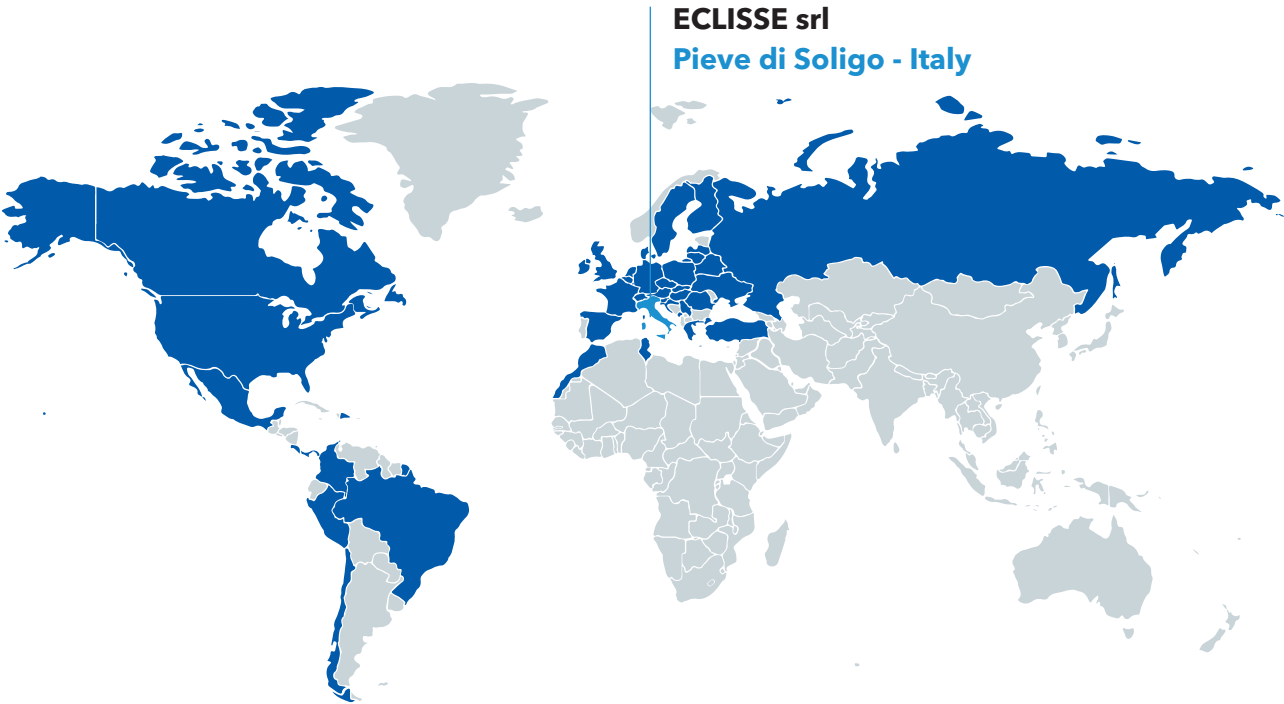


ABOUT US

ECLISSE began manufacturing sliding pocket door systems in 1989 in its factory near Treviso, Italy, and became an immediate success. This rapid success was based on highly innovative product design and advanced production techniques.

Better products and design quickly led to expansion throughout Europe where ECLISSE has become the largest producer of these systems. Its aim is to develop a construction technology characterized by innovation and excellence of quality standards.

ECLISSE WORLD



SUBSIDIARIES

- ECLISSE FRANCE S.a.s.
Quimper - France
- ECLISSE POLSKA Sp. z o.o.
Rokitki - Poland
- ECLISSE GmbH
Wien - Austria
- ECLISSE ČR, s.r.o.
Ritka - Czech Republic
- ECLISSE IBERIA S.I.
Ripoll Barcelona - Spain
- ECLISSE BRASIL
Comercio importação exportação e serviços LTDA
Vila Velha - Brazil
- ECLISSE DEUTSCHLAND GmbH
Monaco - Germany
- ECLISSE SLOVAKIA, s.r.o.
Banská Bystrica - Slovakia
- ECLISSE EST S.r.l.
Bucarest - Romania
- ECLISSE UK Ltd.
Grantham - United Kingdom

DISTRIBUTORS

- ECLISSE North America, LLC
Los Angeles - United States of America
- Veneto Porte Plusz Kft.
Székesfehérvár - Hungary
- Häfele Türkiye A.Ş.
Istanbul - Turkey
- Marsica Special Doors & Frames BV
Voorhout - Netherlands
- TDV - Vishera Group
Moscow - Russia
- Muotolevy Oy
Nummela - Finland
- Techno-Bat
Tunis - Tunisia
- ECLISSE Scandinavia ApS
Tommerup - Denmark
- Ovoconcept d.o.o.
Belgrade - Serbia
- UAB "GSV Group" - Vituko Durys
Vilnius - Lithuania

- Sfakstar
Casablanca - Morocco
- Grupo ECB S.p.a
Santiago - Chile
- Miroljub Teinovič (Agent)
Slovenia | Croatia | Montenegro
- Valantis Grammenopoulos (Agent)
Greece
- Alexander Martynov (Agent)
Ukraine
- Studio 67 (Agent)
Mexico | Colombia | Panama | Costa Rica | Santo Domingo

Luigi De Faveri establishes ECLISSE S.r.l. in Falzé di Piave, Treviso. The first models to be produced are ECLISSE SINGLE, ECLISSE DOUBLE, ECLISSE TELESCOPIC, ECLISSE UNILATERAL and ECLISSE NOVANTA.

In 1991, the first patent is obtained: weld-free attaching system that fasten the mesh to the counterframe (plaster version). The absence of welds prevents the formation of rust and possible mesh detachments.

The extractable track is patented. In the same year, ECLISSE launches its stud wall kit with aluminium profiles and screws.

In 1996 the company moves to Pieve di Soligo, Treviso, in a newly built dedicated structure. In the same year, ECLISSE inaugurates the first sister company **ECLISSE France SAS**, in Quimper.

ECLISSE patents the under frame tear-off profile, to correct possible differences in height between the finished floor level and the bottom of the installed counterframe can be adjusted. The expansion and consolidation in international markets leads ECLISSE to Poland. **ECLISSE Polska Sp. z o.o** is opened in Tczew. Also, the first website is launched.

The distribution network expands: **ECLISSE Wien GmbH** is established in Vienna.

ECLISSE revolutionises the concept of the counterframe and patents ECLISSE LUCE, the first system designed to allow the insertion of electrical wiring. The growth of the group brings the company to the opening of **ECLISSE ČR, s.r.o.** in Prague.

In 2003, the ECLISSE CIRCULAR model is introduced: the first counterframe for curved sliding pocket doors on the market.

The alignment bar keeps the counterframe perfectly aligned during installation. It provides a solid joint between the frame and the metal stop jamb, guaranteeing a perfect squared positioning.

ECLISSE consolidates its presence in Spain and sets up **ECLISSE Iberia S.L.** in Barcellona. The first version of sliding pocket door system without jambs and architraves is marketed: it is called ECLISSE SYNTESIS LINE. **ECLISSE Slovakia, s.r.o.** is established in Banská Bystrica.

In 2007, **ECLISSE BRASIL - Trading e Logistica LTDA.** (Vila Velia) is the first ECLISSE subsidiary overseas.

The expansion continues in Germany with **ECLISSE Deutschland GmbH.**

ECLISSE EST S.r.l. in Bucharest officially becomes the Romanian subsidiary.

New patent: ECLISSE EWOLUTO, the counterframe that allows to hang wall shelves and furniture. The ECLISSE showroom in Milan is the first exhibition space devoted entirely to the sliding systems.

- 1989
- 1991
- 1992
- 1996
- 2000
- 2001
- 2002
- 2003
- 2005
- 2006
- 2007
- 2008
- 2009
- 2010
- 2012
- 2013
- 2014
- 2015
- 2017
- 2018
- 2019
- 2020
- 2021
- 2023
- 2024

ECLISSE SYNTESIS LUCE is the pocket door without jambs and architraves prepared for the insertion of electrical wiring. In Prague, a new ECLISSE showroom of over 100 sqm is inaugurated.

ECLISSE SYNTESIS FLUSH COLLECTION is the complete modular system for flush walls that now includes both sliding pocket door systems and flush hinged doors.

ECLISSE SHODŌ COLLECTION is the first integrated system for sliding pocket doors and flush hinged doors where jambs, architraves and baseboards are installed flush to the wall, with no interruption. ECLISSE opens its showroom in Perugia, Italy.

ECLISSE SYNTESIS TECH is the solution that completes ECLISSE SYNTESIS FLUSH COLLECTION and that allows to contain service rooms. Wiring, plumbing, electrical systems and even closets can now be hidden discreetly inside the wall.

ECLISSE opens its showrooms in Pescara, Italy, and in Munich. Not simple showrooms but reference points for architects, interior designers and private customers. Places open to training sessions and to the development of synergies with all the players.

ECLISSE SYNTESIS BATTENTE GLASS and ECLISSE ACOUSTIC are launched. Technology in the service of design and living comfort.

ECLISSE 40 is born! The door frame is shown for the first time: it emerges from the wall leaving a mark, becoming a discreet and yet strong presence. Inclined at 40 degrees, the frame is no longer just a functional structure, but a decorative element itself. **ECLISSE UK Ltd.** officially becomes the 10th subsidiary. ECLISSE also celebrates its 30th anniversary and inaugurates new headquarters.

Always by the side of the installer. Resin-coated profiles and pre-drilled horizontal bars are two clever innovations which reduce installation times for pocket door systems, with no compromises on the final result.

The innovative ECLISSE DELTA inclined baseboard and the decorative aluminium profile ECLISSE MIMESI for flush pocket doors enrich ECLISSE's range of interior furnishing solutions. In the same year, ECLISSE introduced ECLISSE SYNTESIS AREO: flush access panels for built-in closets, credenzas, storage closets, wall niches and equipped under-stair closets. ECLISSE also opens a new showroom in Naples, Italy.

ECLISSE launches a new version of ECLISSE SYNTESIS LINE BATTENTE with acoustic performance. ECLISSE's latest showroom opens in Cuneo, Italy.

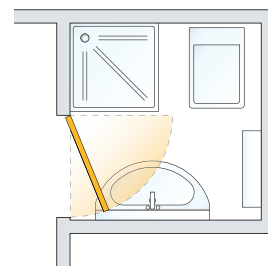
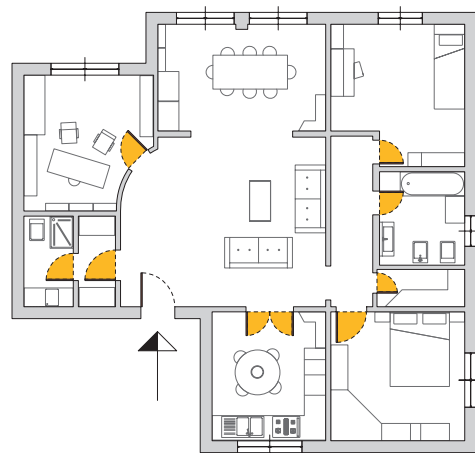
ECLISSE celebrates its 35th anniversary on 10th January. ECLISSE develops new accessories to maximise the functionality of ECLISSE SYNTESIS AREO and launches the acoustic version of the flush sliding model ECLISSE SYNTESIS LINE.

A REASONED CHOICE

GETTING MORE SPACE

WHEN YOU USE A HINGED DOOR.

Compared to conventional hinged doors, sliding pocket doors offer technical details in every living space. It is estimated that in an average house, more than 8% extra space can be freed by the use of sliding doors; that is 8 sqm extra space in a 100 sqm apartment! ECLISSE developed an elegant, practical alternative to hinged doors: a framework that forms part of the wall and allows your doors to slide effortlessly inside the wall.

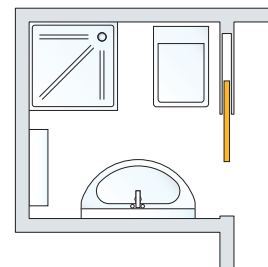
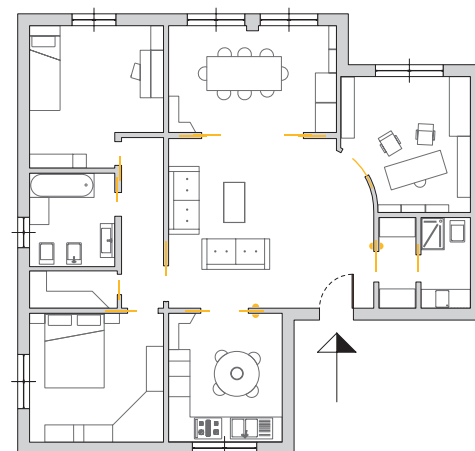


Reasons not to use a hinged door

- Restricts your planning options
- Wastes lots of space
- Difficult to use in small areas

USING AN ECLISSE SLIDING DOOR.

ECLISSE has been manufacturing frames for sliding pocket doors since 1989 and it is the largest worldwide producer of these integrated systems. This has been achieved through a constant technical innovation with high performance materials and a finished product that is easy to install and gives long term customer satisfaction.



Reasons to choose ECLISSE

- More freedom in your layout
- Uses all the available space
- Opens up smaller areas

8m²
An extra 8 sqm of space

A SOLUTION FOR EVERY NEED

POCKET AND HINGED DOOR FRAMES

TRADITIONAL, MODERN, CONTEMPORARY.

THE CHOICE IS YOURS.

Since its beginning, ECLISSE has been and remains dedicated to advancing the design of the sliding door systems.

The sliding door frame was not considered to be a simple structure for holding a door, but rather a complex system which must above all communicate with the surrounding structure in which it is fitted.

This realisation led to the development of a range of specific sliding pocket door systems for solid and stud walls. With one eye permanently fixed on technology and the other on design, ECLISSE adopted an approach for developing solutions that could fit a range of different styles.

Departing from the original, rather traditional solutions with profiles designed to support jambs and architraves, flush sliding pocket door systems and hinged door frames were introduced which dispense with the need for exterior mouldings.



THE VALUE OF THE UNSEEN

INSIDE ECLISSE COMPANY

SUSTAINABILITY

ECLISSE operates in compliance with the UNI EN ISO 14001, which defines the development of an effective Environmental Management System. This certification ensures the company's commitment to preventing pollution and ensuring environmental compatibility of its sliding systems and frames.

Furthermore, with reference to the UNI EN ISO14021 standard for Environmental Product Self-Declaration we can say that:



ECLISSE Unico - stud wall version

- it is composed of 85% recyclable material
- 100% of the packaging used is recyclable
- it is made of at least 18% recycled material
- at least 65% of the energy used for production comes from renewable sources



ECLISSE Unico - solid wall version

- it is composed of 89% recyclable material
- 100% of packaging used is recyclable
- it is composed of at least 17% recycled material
- at least 18.6% of the energy used for production comes from renewable sources



ECLISSE Syntesis Line - stud wall version

- it is made of 99% recyclable material
- 100% of the packaging used is recyclable
- it is composed of at least 28% recycled material
- at least 35% of the energy used for production comes from renewable sources

PEOPLE

ECLISSE chose to voluntarily adopt a Safety Management System and Occupational Health in conformity with the norm OHSAS 18001. OHSAS certification identifies an internationally recognized standard that aim at the protection of the health and safety of company employees and all those who are exposed to the company's activities.

INNOVATIONS AND CERTIFICATIONS

ECLISSE S.r.l. designs and manufactures sliding pocket door systems, frames for hinged door, accessories and electric automations for doors in accordance with the UNI EN ISO 9001. For this reason, the company created a Research and Development team, which promotes voluntary testing under the observation of Italian CSI laboratory.



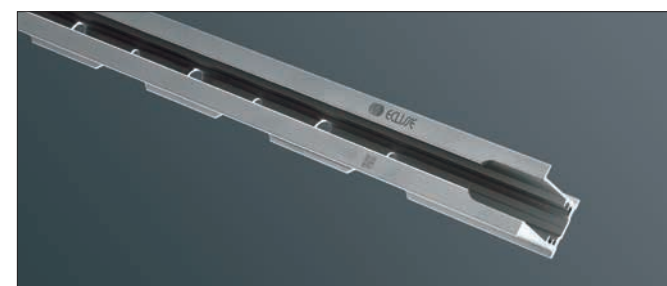
DURABILITY TEST FOR RUNNERS (UNI EN 1527)

Tests carried out in accordance with the European Standard UNI EN 1527 on 100 and 150 kg payload runners. After 100,000 opening and closing cycles (equal to 30 years of use) the runners showed no significant traces of wear or damages whatsoever and still worked.



CAPACITY LOAD TEST FOR ECLISSE EWOLUTO

Using a traditional mechanical two-points wall anchorage a capacity of up to 180 kg (close to the wall) is guaranteed, while a chemical anchorage can reach a capacity of 360 kg against the wall and 60 kg at a distance 600 mm from the wall. The maximum capacity of a handle bar, fixed with a four-points chemical anchorage, is 100 kg at a distance of 600 mm from the wall.



FULLY EXTRACTABLE TRACK

It is made from the more robust aluminium alloy 6060 (UNI 9006:1) and protected by a 10 µm anodic layer with a T5 thermic treatment.



ANTI-CORROSION RESISTANCE (UNI EN 1670)

An ECLISSE sliding pocket door system with a three-layer protection (galvanization, primer coating and epoxy paint coating) showed no sign of rusting after 240 hours of salt spray test in a 95% humidity environment with a 5% NaCl solution (C.S.I. test).




STRONG SHOCK RESISTANCE (UNI EN 1629)

An ECLISSE sliding door system was left completely undamaged after passing the European recognised shock test: a 30 kg bag crashed into it from different heights in accordance with the UNI EN 1629:2000 requirements.



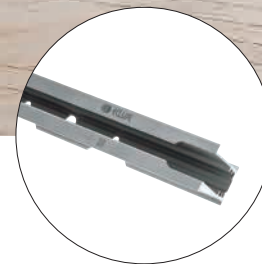
INDEX

ECLISSE CLASSIC COLLECTION	ECLISSE Single - ECLISSE Double ECLISSE Luce ECLISSE Telescopic ECLISSE Circular ECLISSE Unilateral ECLISSE Novanta ECLISSE Acoustic Accessories	20 22 24 26 28 30 32 34
ECLISSE SYNTESIS COLLECTION	ECLISSE Syntesis Line ECLISSE Syntesis Luce ECLISSE Syntesis Line Battente ECLISSE Syntesis - Acoustic Kit ECLISSE Syntesis Areo ECLISSE Syntesis Tech ECLISSE Mimesi Accessories	38 42 44 50 52 58 60 62
ECLISSE 40 COLLECTION	ECLISSE 40 Accessories	66 71
 ECLISSE CARE COLLECTION	ECLISSE Hoist ECLISSE Ewoluto ECLISSE Twice	73 74 75
ECLISSE SPECIAL PRODUCTS	Ceiling track Exposed sliding door kit	77 77
ECLISSE BASEBOARDS	ECLISSE Delta ECLISSE Syntesis Baseboard	79 79
ECLISSE HANDLES	Handles for wooden doors Handles for glass doors Handles for glass and aluminium doors	81 81 82



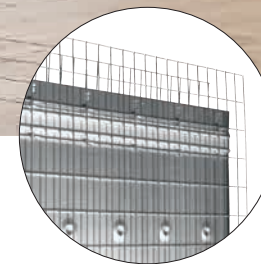
ECLISSE CLASSIC COLLECTION

Systems with jambs and architraves.



EXTRACTABLE TRACK

The serenity of knowing that you can extract the patented track at any time, to clean the door sliding guide, replace it with a new track or install accessories.



PROTRUDING KNURLED PLASTER MESH

It connects the wall and the frame and offers an increased grasp and avoids cracks, for a joint between the sliding pocket system and the wall.



PRE-DRILLED HORIZONTAL BARS

The reinforced horizontal bars come with a grid array of drillholes so that screws can be fastened to the metal sheet even more easily and faster than before.

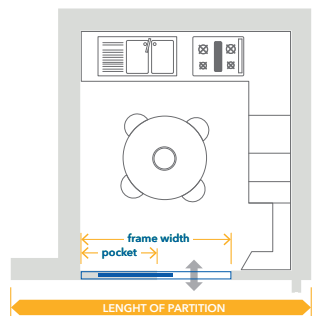


LUCE SYSTEM

The box-frame can be arranged with any electric device, up to 10 electrical boxes per pocket (5 on each side).

SIZE GUIDE

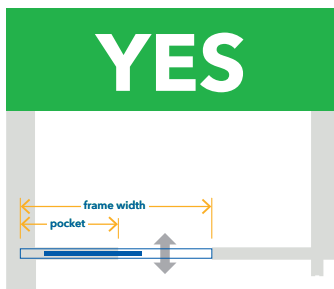
CHOOSING THE RIGHT POCKET DOOR



STEP 1

MEASURE THE AVAILABLE SPACE

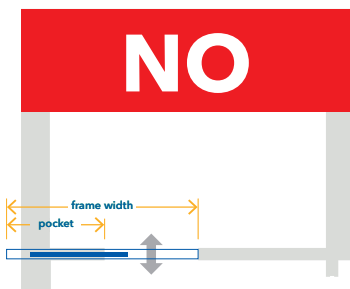
Measure the overall wall space you have available. The pocket door frame needs to fit within this space.



STEP 2

CHOOSE THE STANDARD POCKET DOOR FRAME SIZE THAT WILL FIT THE SPACE

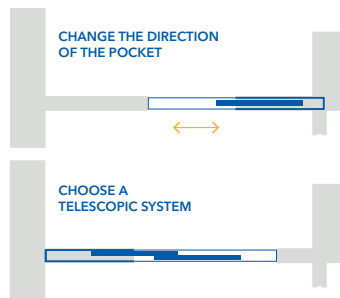
Choose from the sizing table the frame size that fits within the available space and the size door you can fit in that frame.
E.g.: We will pick an ECLISSE SINGLE system.
Overall wall space available = L1800xH2300 mm.
Door panel size = you may want to use the largest possible door size to provide the widest passage.
From the ECLISSE SINGLE size chart you can see that the widest frame size fitting the available space is L1697xH2190 mm. This will provide a max. passage size of L800xH2100 mm and will require you to buy a door L815÷835xH2110 mm.



STEP 3

YOU NEED A WIDER PASSAGE WIDTH?

If you want a larger passage width or door size than the frame size is providing...

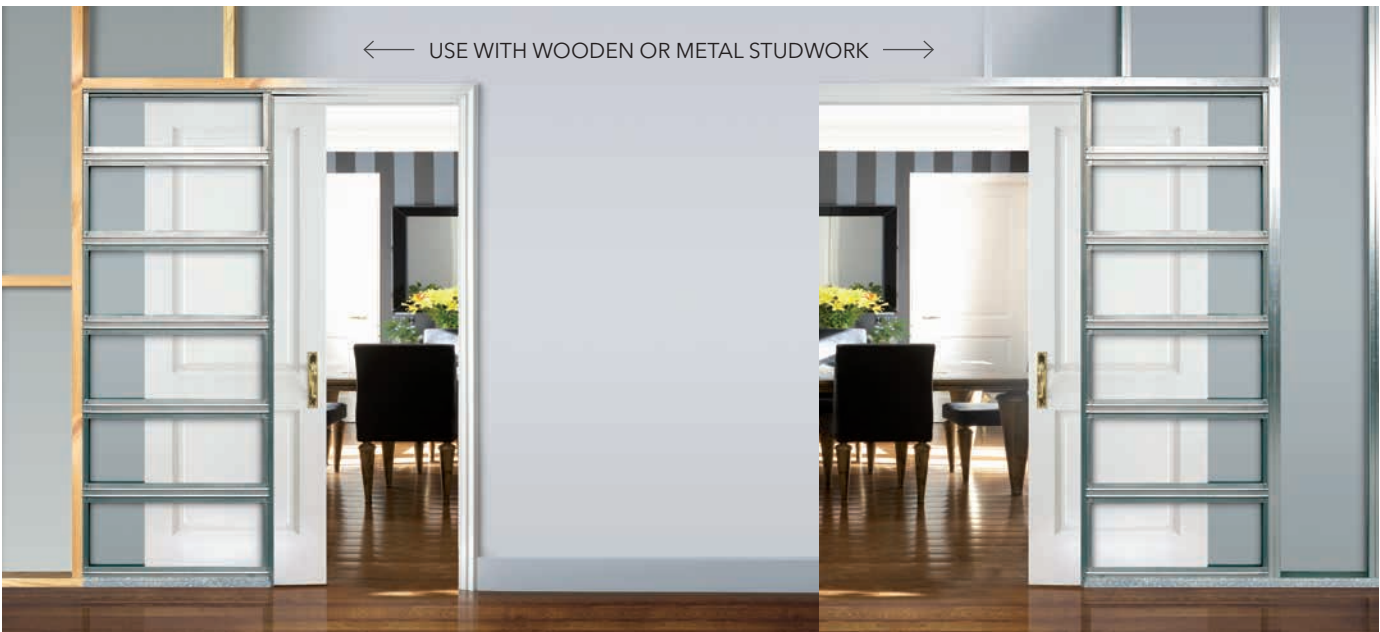


ALTERNATIVE SOLUTIONS

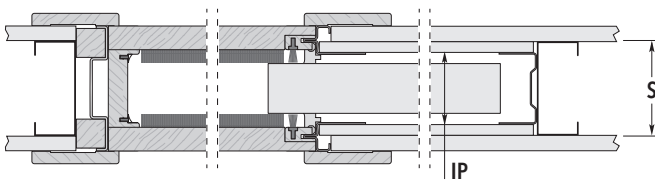
...you might for example consider on which side to have the pocket.
It may be that switching the position of the pocket with respect to door passage gives you a better solution.
If you require a larger passage width, a single telescopic system could give you a possible solution.
Just browse our complete product range to find the perfect solution for your needs!

SIZE GUIDE

STUDWORK, BRICKS AND FINISHED WALL THICKNESS



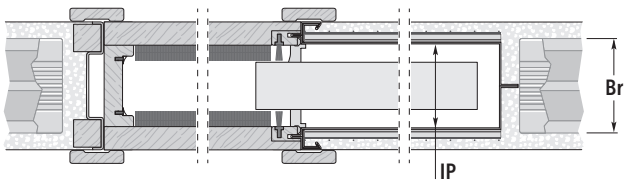
EUROPEAN WOOD/METAL STUDWORK
FOR STUD WALL



STUDWORK= S	INTERNAL PASSAGE= IP
75	54
95*	79*
100	79

Dimensions are given in mm.

EUROPEAN BRICK THICKNESS
FOR SOLID WALL



BRICKS= Br	INTERNAL PASSAGE= IP
60	54
80	72
100	89
120	114

Dimensions are given in mm.

Stud walls are made from wooden or steel studwork with plasterboard attached. This is important information to be considered while looking at the product size charts, as there are many sizes of studwork around the world. The steel framework replace a portion of the studwork and the doors are hung from the top track. ECLISSE pockets can be used with steel or wooden studwork. In the photo you can see what it looks like before applying the plasterboard.

Adding the plasterboard to the studwork you will reach the required finished wall thickness dimension. Here is an example (considering the plasterboard is nearly always 12.5 mm thick):

- 75 mm stud work plus 12.5 mm plasterboard on each side gives a finished wall thickness of 100 mm;
- 100 mm stud work plus 12.5 mm plasterboard on each side gives a finished wall thickness of 125 mm.

*Dimensions and sizes different from the following chart.



ECLISSE SINGLE

ECLISSE DOUBLE

Sliding pocket door system for single or double door with jambs and architraves.

Zero problems of space, endless creative possibilities.

L 600 ÷ 2000 mm

H 500 ÷ 3000 mm



L 1200 ÷ 4000 mm

H 500 ÷ 3000 mm



Suitable for all rooms of the house, both for refurbishment and new constructions, ECLISSE Single is perfect for bathrooms and closets but also for walk-in closets, en-suites, pantries, and hallways because it optimizes the available volumes, even when space is limited.

Key Features

- Available in dedicated versions for solid and for stud walls, it fits perfectly in any project.
- By accommodating both wooden and glass doors, it allows for door panels and jambs to be interpreted according to any taste. As long as they fit, old doors can also be installed (good for both the wallet and the environment).
- Thanks to the exclusive running track, fully extractable at any time with no need of major masonry work, it is always possible to fit accessories that enhance the functionality of the pocket door, such as soft closers and self-closing devices.





ECLISSE LUCE

Wiring-ready sliding pocket door system for single or double door with jambs and architraves.
Give light to your pocket doors

L 600 ÷ 1300 mm
H 1000 ÷ 2600 mm



Patented technology, ECLISSE Luce was the first sliding pocket door system on the market to allow the installation of light fittings, thermostats, switches and telephone wiring in the same wall section where it is hosted.

The counterframe is designed to allow the insertion of wires and the installation of electrical boxes, both in the solid wall version and in the stud wall version.

The portion of the wall that hosts the counterframe thus becomes available for illumination and, especially, switches, which can be placed right next to the passage.
Super useful with double-leaf doors!

Key Features

- It can host up to 10 electrical boxes (5 on each side) in the single-leaf version and up to 20 electrical boxes (5 per side on each pocket) in the double-leaf version.
- Especially useful in combination with switch-controlled motorisations for sliding doors.
- It can accommodate both wooden and glass doors.





ECLISSE TELESCOPIC

Sliding pocket door system for two or four parallel doors disappearing into the same pocket.

Maximum opening widths, minimum overall dimensions.

L 1140 ÷ 2340 mm

H 1000 ÷ 2600 mm



L 2300 ÷ 4700 mm

H 1000 ÷ 2600 mm



Perfect for living rooms, dining areas, and meeting rooms, this sleek design ensures the smallest footprint for wide doorways, creating open and luminous environments or ensuring privacy when needed.

Choose ECLISSE Telescopic for a space-saving, stylish solution that effortlessly transforms your rooms.

Key Features

- Exclusively designed for wooden door panels.
- The version for two pairs of parallel doors can furnish openings up to 4700 mm wide.

Recommended accessories

- Telescopic synchronization.
It allows the simultaneous and harmonious movement of the two door panels which slide in the same direction, gently and without tearing or kickbacks.





ECLISSE CIRCULAR

Sliding pocket door system for single or double curved door with jambs.

Sinuous lines for elegant and sophisticated architectural projects

L 600 ÷ 1200 mm
H 1000 ÷ 2600 mm

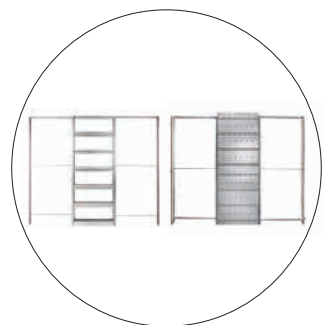


Conceived to offer new solutions to the most diverse needs in interior design, ECLISSE Circular was designed to hide a sliding door into a curved wall, to free creativity and to reinterpret the traditional space partitioning in domestic spaces and commercial premises. Its sinuous lines soften the space segmentation and give the whole room a sophisticated look.

Key Features

- Entirely hand-made to measure, it tailors any project's needs.
- Radius of curvature available ranges from 1000 for both solid and stud wall versions.
- It can accommodate wooden doors.





ECLISSE UNILATERAL

Sliding pocket door system for two independent doors with jambs, sliding into the same pocket.

L 600+600 ÷ 1000+1000 mm
H 1000 ÷ 2600 mm

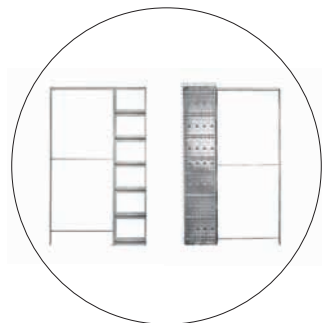


Make the most of even the most confined spaces, such as hallways and entrances, by utilizing the tightest areas. During the opening phase, the two door panels elegantly juxtapose within the space of a single wall section.

Key Features

- A single pocket for two separate doorways, it allows the total usage of the available square footage.
- It can accommodate both wooden and glass doors.
- It fits the same accessories of a standard single sliding pocket door system, for enhanced usability and greater comfort.





ECLISSE NOVANTA

Sliding pocket door system for a half pocket and half hinged door.
A functional, hybrid system for the tightest spaces.

L 600 ÷ 1200 mm
H 2000/2100 mm



Transform your small spaces with a groundbreaking solution that defies spatial limitations.

Both a sliding door and a swing door, ECLISSE Novanta is a single door system, part of which fits into the pocket while the other part opens as a classic hinged door. This way, an overall standard passage size is ensured even where there is not enough wall space for a standard-size pocket nor enough room for the full operation of a traditional swing door.

Key Features

- The counterframe does half the job, the special two-piece door does the rest.
- Exclusively designed for wooden door panels.
- Ideal for bathrooms, closets and utility rooms.

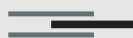




ECLISSE ACOUSTIC

Soundproofing solution for sliding pocket door systems with jambs with sound insulation up to 38 dB.
Silence has more space.

L 600 ÷ 1000 mm
H 2000 ÷ 2400 mm



Redefine your space with a sound-proofing solution that brings peace and quiet to your surroundings. Designed specifically to reduce the noise between adjoining rooms, ECLISSE Acoustic has all the advantages of a sliding pocket door system associated with high soundproofing performance.

Each component was developed to seal the door perimeter and ensure sound isolation. When the acoustic door panel closes, the special gaskets and weatherstrips get activated to seal the whole perimeter of the door, fixing the drafts and soundproofing the passage.

The acoustic kit reduces the passage width by 10mm.

Components

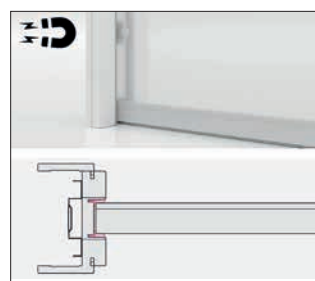
- Acoustic door panel: 40 mm thick, it features a special stratigraphy for sound-proof performance.
- Acoustic jambs, pre-milled for gaskets application.
- Gaskets and bumps: activated upon closure, they seal vertical gaps to prevent sound leakage.
- Magnets: they ensure a perfect door closure, keeping it tightly sealed to the door post.
- Weatherstrips: activated upon closure, they seal the upper and lower gaps.

Compatible sliding pocket door systems

- ECLISSE Single
- ECLISSE Luce Single.



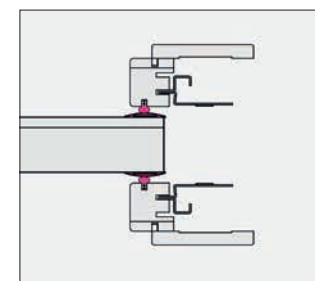
UPPER
WEATHERSTRIP



MAGNETS



LOWER
WEATHERSTRIP



ACOUSTIC SEALS
AND GASKETS



DOOR
PANEL



JAMBS AND
ARCHITRAVES

ACCESSORIES - ECLISSE Classic Collection

ECLISSE BIAS



SOFT CLOSE INSIDE THE TRACK

ECLISSE BIAS is the ultimate soft closer for sliding pocket doors with anti-slam technology. Fully integrated inside the track, invisible from the outside, it ensures a gentle slowdown, guiding the door to a silent and smooth closure.

ECLISSE BIAS DS



BI-DIRECTIONAL SOFT CLOSE INSIDE THE TRACK

ECLISSE BIAS DS is the next level of sophistication with its bi-directional operation. This innovative soft close damper, fully integrated within the track and invisible as the regular ECLISSE BIAS, gently slows down and accompanies the door both in the opening and in the closing movements, with a smooth and quiet motion in both directions.

TELESCOPIC SYNCHRONISATION



SIMULTANEOUS MOVEMENT OF TWO PARALLEL DOORS

Unlock synchronised elegance with this accessory specifically designed for parallel sliding doors. The synchronization ensures simultaneous and smooth movement of two door panels, gliding harmoniously in the same direction: the first door drags the second one, for a silent and elegant opening.

DOUBLE DOOR CO-ORDINATION - Classic



SYNCHRONISATION FOR DOUBLE DOORS WITH JAMBS

Experience seamless double door co-ordination with this system, allowing both doors to open and close simultaneously by operating just one of them. This innovative feature ensures convenient and comfortable use. Fully integrated inside the track, it is invisible from the outside with closed doors and is supplied as standard in combination with ECLISSE BIAS.

SELF-CLOSING SYSTEM



AUTOMATIC MECHANICAL DOOR-CLOSING SYSTEM

Once opened, the door closes by itself. Discover the effortless convenience of an automatic closing device for sliding pocket doors. The mechanism is completely invisible from the outside and the door closing speed can be adjusted at any time without removing the door, jambs and architraves. One less thing to think about! Ideal for bathrooms, en-suites, closets, and storage rooms.

E-MOTION



MOTORISED OPENING AND CLOSING

The effortless magic of an automatic door. E-MOTION is a linear motorised unit with magnetic technology, very silent and easy to install. Once installed, it automatically set speed and acceleration of the opening-closing cycle. Could not be easier!

Optional control systems:

- Remote control with receiver card.
- Active infrared sensor with variable detection area.
- Touch switch control.
- Electromechanical block with remote control.

ANTI-WARP PROFILE



ALUMINIUM PROFILE FOR A SAFE SLIDING SEAT

Enhance your sliding experience! The anti-warp profile is an extruded aluminium guide specifically designed and developed to be fitted into the bottom of sliding pocket doors. Easily applied to both newly installed and existing pocket doors, this profile requires minimal processing, needing only a slight enlargement of the milled recess along the door panel's bottom thickness. Once installed, it prevents narrowing of the milled recess where the door guide slides, due to humidity-induced swelling, ensuring correct smoothness.

PUSH&PULL C



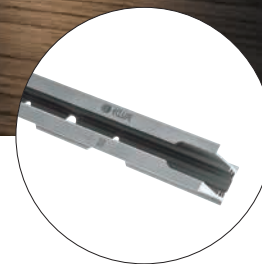
A SIMPLER DOOR CLOSURE

ECLISSE Push&Pull C is the special add-on for sliding pocket doors that lets you effortlessly pull out the door with a gentle touch. When the door is set to slide all the way into the pocket and stay flush with the jambs or the pocket entrance, it allows the door panel to be pulled out of the pocket with a light pressure, easing the grip and making the door handier to close.



ECLISSE SYNTESIS COLLECTION

Flush-to-wall systems without jambs and architraves.



EXTRACTABLE TRACK

The serenity of knowing that you can extract the patented track at any time, to clean the door sliding guide, replace it with a new track or install accessories.



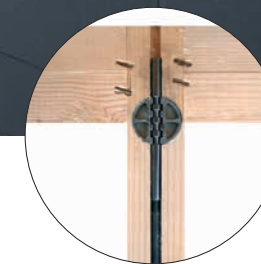
RESIN-COATED PROFILE

The resin-coated profile needs a much thinner layer of drywall plaster along the perimeter of the doorway, reducing the drying and the installation time.



PRE-DRILLED HORIZONTAL BARS

The reinforced horizontal bars come with a grid array of drillholes so that screws can be fastened to the metal sheet even more easily and faster than before.



STANDARD TENSIONING ROD

This adjustable device helps keep the door panel in constant tension, improving the door flatness and guaranteeing coplanarity with the wall.



ECLISSE SYNTESIS LINE

Sliding pocket door system for flush single or double door.
Maximum functionality with minimal design.

L 600 ÷ 4000 mm
H 1000 ÷ 3000 mm



ECLISSE Syntesis Line is the flush sliding pocket door system, able to disappear completely in the wall. The absence of jambs and architraves facilitates the integration of the sliding surface, merging technology and design in the name of modernity.

Its minimalist appearance is perfect for any environment and thanks to its features, it fits in with any type of interior décor. It allows each room to be customised, with paint or wallpaper. By accommodating both wooden and glass doors, it allows for door panels and jambs to be interpreted according to any taste.



The counterframe includes constructive details, such as the innovative resin-coated profiles, that can easily be painted or decorated to match the wall and make the structure completely invisible and integrated into the wall, for a perfect camouflage of the structure.



Right. ECLISSE Syntesis Line Double with glass and aluminium door panels (Tobacco frame and Bronze single glass).
Below. ECLISSE Syntesis Line Double with glass door panel (smoked glass).





ECLISSE SYNTESIS LUCE

Wiring-ready sliding pocket door system for flush single or double door.

Elegance and functionality in one product.

L 600 ÷ 1300 mm
H 1000 ÷ 2700 mm



The ECLISSE Syntesis Luce wiring-ready counterframe encloses a plurality of performances. It is the only system capable of combining the minimalist aesthetics of the ECLISSE Syntesis design with the know-how of Luce, the exclusive patented technology that allows lighting points, thermostats, sockets and electrical boxes to be integrated into the portion of the wall housing the counterframe.

The wall is now fully available for illumination and, especially, switches, which can be placed right next to the door passage. The double-leaf version is the ultimate expression of aesthetics, practicality and functionality.

Key Features

- It can host up to 10 electrical boxes (5 on each side) in the single-leaf version and up to 20 electrical boxes (5 per side on each pocket) in the double-leaf version.
- No need for counterwalls means thinner walls and a more flexible design.
- It can accommodate both wooden and glass doors.



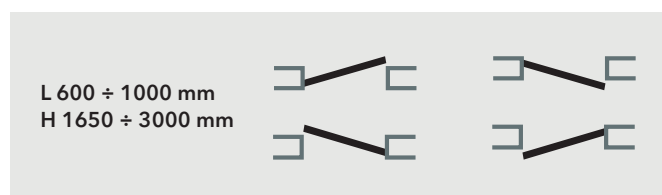
SOLID WALL VERSION





ECLISSE SYNTESIS LINE BATTENTE

Door frame for flush-to-wall single or double hinged door.
Simplicity to shapes, liberty to design.



A perfect flush-to-wall aesthetic, total freedom to your design. ECLISSE Syntesis Line Battente is the solution that allows the installation of a swing door flush with the wall, with no jambs and architraves.

Hidden item or room protagonist. According to your taste, the door can be painted in the same colour as the wall and be completely hidden from the view, or it can be lacquered or decorated with finishing or prints that put it in clear prominence making it a real design element.

The system also offers the possibility to have the door flush with the ceiling (without upper header) to have a continuous and free ceiling between adjacent rooms, or with the upper part inclined at different angles (with or without header) for attics or under-stairs access.

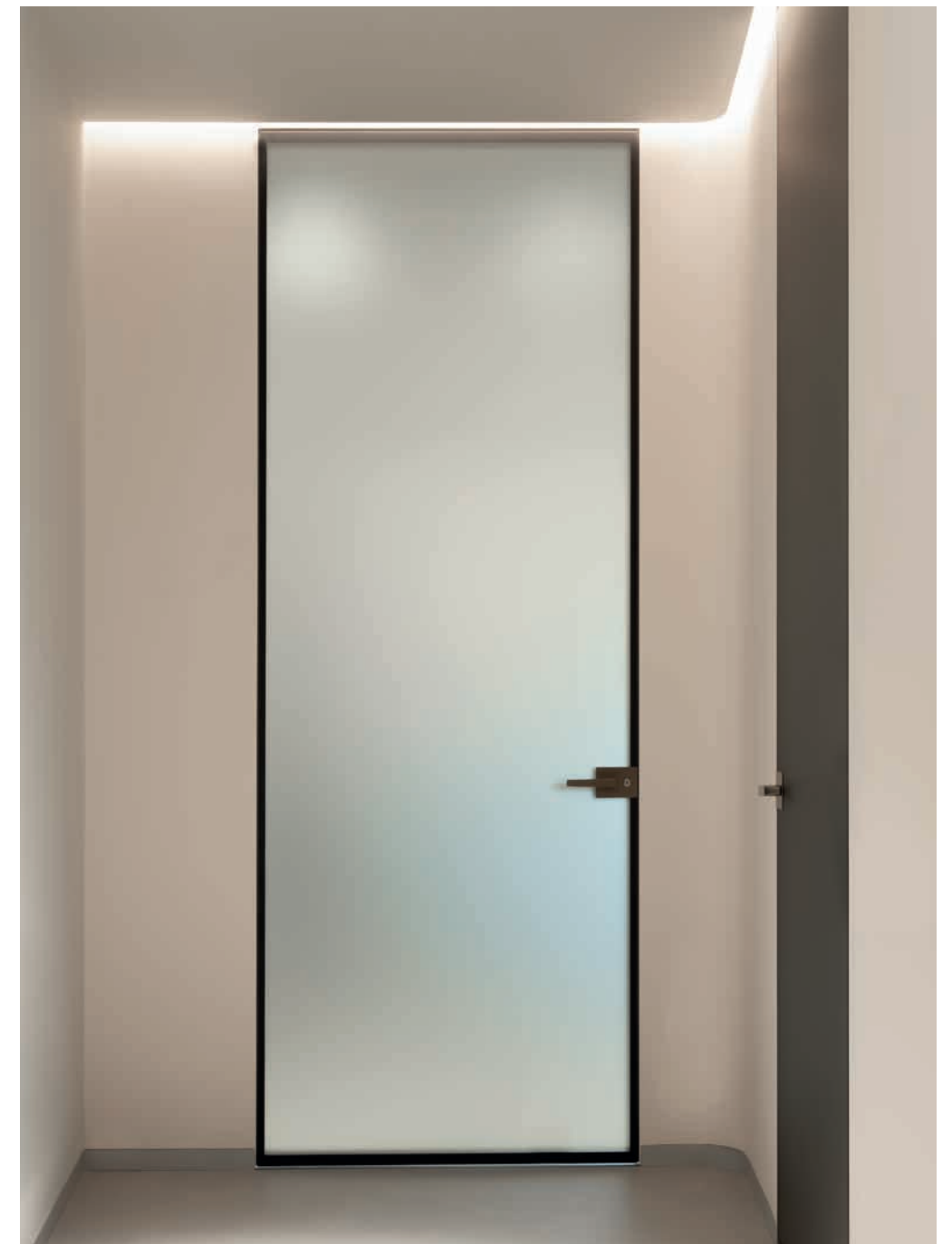
Key Features

- The frame is universal for solid and stud walls and is primed to be painted together with the wall without additional steps.
- It can accommodate both wooden and glass doors.
- Wooden door panels supplied by ECLISSE are equipped with an adjustable internal tie rod to maintain a constant coplanarity with the wall.

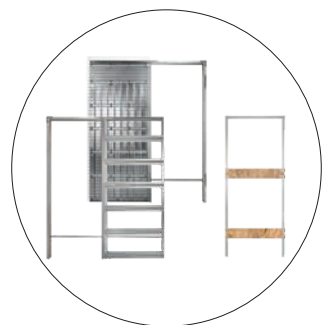




Left. ECLISSE Syntesis Line Battente coated with wallpaper.
Below. ECLISSE Syntesis Line Battente with glass and aluminium door panel (Bronze frame and satin extra-clear double glass).







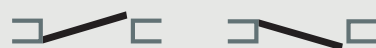
ECLISSE SYNTESIS - Acoustic Kit

Soundproofing solution for flush doors with sound insulation of 34 dB for pocket doors and up to 33 dB for hinged doors.
ECLISSE flush doors with high sound-proof performances.
Reduce the noise through adjoining rooms thanks to the combined action of specific components.

L 600 ÷ 1000 mm
H 1000 ÷ 2700 mm



L 600 ÷ 1000 mm
H 1650 ÷ 2700 mm



Add to your ECLISSE Syntesis Line pocket frame and ECLISSE Syntesis Line Battente frame the acoustic components designed specifically to reduce the noise between adjoining rooms.
Each component was developed to seal the door perimeter and ensure sound isolation.

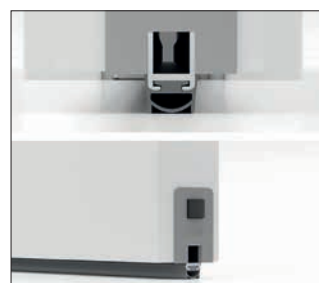
When the acoustic door panel closes, the special gaskets and weatherstrips get activated to seal the whole perimeter of the door, fixing the drafts and soundproofing the passage.

Components:

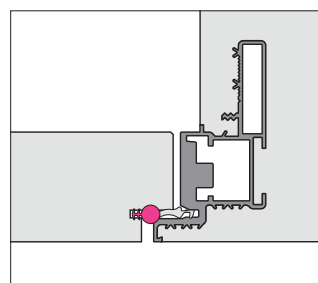
- Acoustic door panel: 40 mm thick, it features a special stratigraphy for sound-proof performance. The hinged version also features the 45 mm door panel.
- Gaskets and bumps: activated upon closure, they seal vertical gaps to prevent sound leakage.
- Magnets: they ensure a perfect door closure, keeping it tightly sealed to the door post.
- Weatherstrips: activated upon closure, they seal the upper and lower gaps.



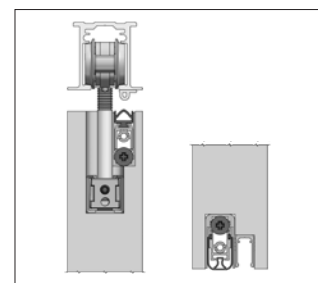
DEDICATED DOOR PANELS
AND HARDWARE



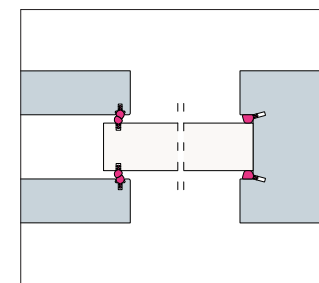
LOWER
WEATHERSTRIP



ACOUSTIC SEALS
AND GASKETS



UPPER AND LOWER
WEATHERSTRIPS



ACOUSTIC SEALS
AND GASKETS



MAGNETS

HINGED DOORS

SLIDING DOORS



ECLISSE SYNTESIS AREO

Flush-to-wall access panel systems.

ECLISSE Syntesis Areo is the solution designed to conceal walk-in wardrobes, cupboards, shoe racks, laundry niches, under-stair closets and technical compartments with a total flush-to-wall effect.

Versatile and elegant, it adapts easily to the available space and the desired function.

The door panel, flush with the wall and coated in white melamine, can be lightly sanded and be painted and finished like the wall, for total homogeneity.

The flush doors are designed for everyday use. The threshold of the frame is designed to ensure a clean and pleasant looking perimeter, while the frame profiles are designed to integrate structurally into the wall, preventing cracks from forming along the perimeter of the opening. The opening systems (hinges and hydraulic pistons) are tested to ensure solidity and reliability over time.

The frame is universal for solid and stud walls.

Openings

- Single door with side opening and horizontal or sloping header.
- Double door with side opening and horizontal or sloping header.
- Top-hung or bottom-hinged flap panel.
- Bifold and double bifold door.
- Modular (up to 8 side-by-side doors).



MODULAR



SINGLE DOOR PANEL



TOP-HUNG PANEL



DOOR PANELS WITH INCLINED HEADER
and BOTTOM-HINGED PANEL



DOUBLE BIFOLD DOOR PANEL



Do you have an alcove that you would like to close without putty?

The new cover for ECLISSE Syntesis Areo, which is attached directly to the frame using special hooks, allows you to bridge up to 1.5 cm between the frame and the wall, without using putty. The fixing of the frame using specific bushings facilitates its adjustment and anchoring.

The cover, made of recycled PVC, is 4.5 cm wide and 1.5 mm thick and is finished with a primer, ready to be painted like the wall, for an optimal aesthetic result.



Do you have an alcove and would like to optimise its space as much as possible?

A special rack, applicable to ECLISSE Syntesis Areo on the inner side, to which the appropriate shelf supports with a depth of 22, 32 or 42 cm can be subsequently attached. The hardware, painted RAL 9006, will allow you to position the desired type of shelf at the height you prefer.



ECLISSE SYNTESIS TECH

Flush-to-wall trapdoor systems.

ECLISSE Syntesis Tech is the solution designed to conceal technical compartments and switchboards with a total flush-to-wall effect.

Designed to adapt to different needs while always remaining hidden, the system consists of metal frame and closing panel. Flush with the wall and coated in white melamine, the panel can be lightly sanded and finished together with the wall, for complete camouflage.

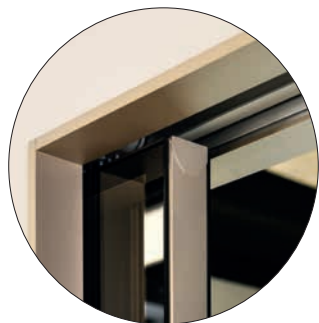
Openings

- Single door with side opening.
- Double door with side opening.
- Top-hung or bottom-hinged flap panel.
- Removable flap panel.

Key Features

- The frame is universal for solid and stud walls.
- Push-pull opening is available, to avoid visible handles.
- Key lock is also available.





ECLISSE MIMESI

Aluminium decorative profile for ECLISSE Syntesis Collection pocket models.

Made of aluminium, ECLISSE Mimesi profiles are designed to allow flush pocket doors of the ECLISSE Syntesis Collection to match with an ECLISSE 40 frame installed in the same room and to create a harmonious, consistent interior. Their minimalist design only covers the visible thickness of the wall respecting the characteristic essentiality of a flush pocket door system.



White



Bronze



Champagne



Tobacco



Above. ECLISSE Mimesi in Champagne finish with glass and aluminium door panel (Champagne frame and Bronze single glass).



ACCESSORIES - ECLISSE Syntesis Collection

ECLISSE BIAS



SOFT CLOSE INSIDE THE TRACK

ECLISSE BIAS is the ultimate soft closer for sliding pocket doors with anti-slam technology. Fully integrated inside the track, invisible from the outside, it ensures a gentle slowdown, guiding the door to a silent and smooth closure.

ECLISSE BIAS DS



BI-DIRECTIONAL SOFT CLOSE INSIDE THE TRACK

ECLISSE BIAS DS is the next level of sophistication with its bi-directional operation. This innovative soft close damper, fully integrated within the track and invisible as the regular ECLISSE BIAS, gently slows down and accompanies the door both in the opening and in the closing movements, with a smooth and quiet motion in both directions.

PUSH&PULL S



A SIMPLER DOOR CLOSURE

ECLISSE Push&Pull S is the special add-on for sliding pocket doors that lets you effortlessly pull out the door with a gentle touch. When the door is set to slide all the way into the pocket and stay flush with the pocket entrance, it allows the door panel to be pulled out of the pocket with a light pressure, easing the grip and making the door handier to close.

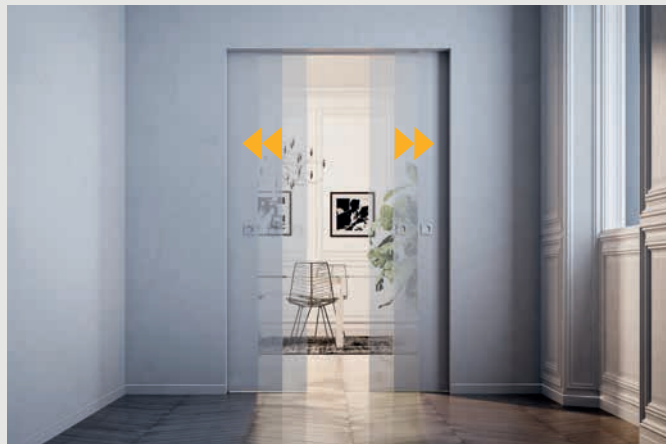
ELECTRIC STRIKE



ELECTRICALLY-CONTROLLED OPENING

The electric strike for hinged door is an access control device for opening doors via an electric impulse. The device requires the installation of a cylinder lock so that the door can be opened in the event of a power outage.

DOUBLE DOOR CO-ORDINATION - Syntesis



SYNCHRONISATION FOR FLUSH DOUBLE DOORS

Experience seamless double door co-ordination with this system, allowing both doors to open and close simultaneously by operating just one of them. This innovative feature ensures convenient and comfortable use. Fully integrated inside the track, it is invisible from the outside with closed doors and is supplied as standard in combination with ECLISSE BIAS.

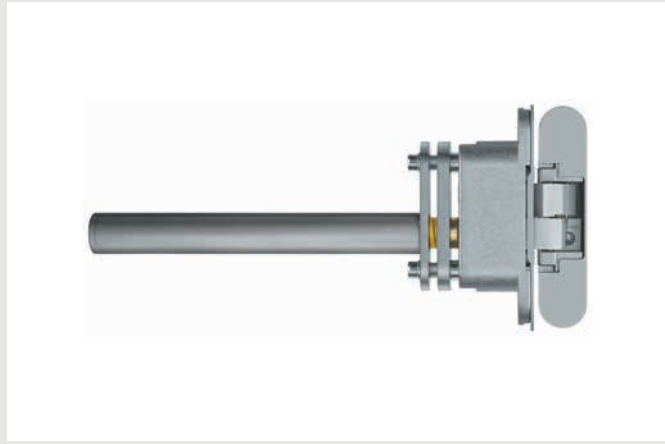
ANTI-WARP PROFILE



ALUMINIUM PROFILE FOR A SAFE SLIDING SEAT

Enhance your sliding experience! The anti-warp profile is an extruded aluminium guide specifically designed and developed to be fitted into the bottom of sliding pocket doors. Easily applied to both newly installed and existing pocket doors, this profile requires minimal processing, needing only a slight enlargement of the milled recess along the door panel's bottom thickness. Once installed, it prevents narrowing of the milled recess where the door guide slides, due to humidity-induced swelling, ensuring correct smoothness.

SELF-CLOSING DOOR HINGE



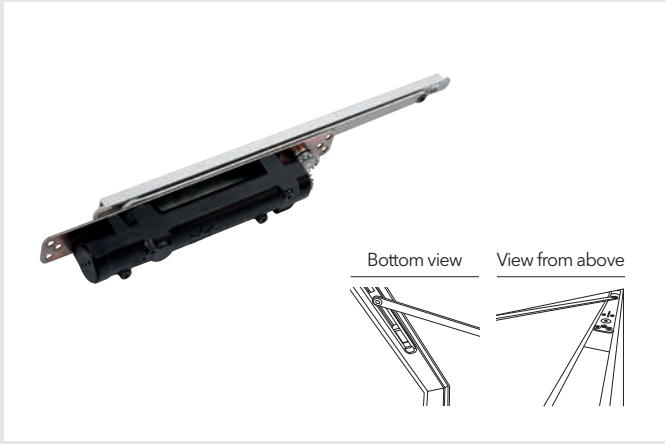
HYDRAULIC MECHANISM FOR SWING DOORS

The new self-closing door hinge is a soft-closing mechanism that gently closes flush-to-the-wall wooden hinged doors. Integrated in the central hinge, it is totally concealed and it enhance the aesthetic of the door considerably.

Colours:

- Champagne
- Bronze
- Tobacco
- White
- Aluminium chrome.

DOOR CLOSER



ARM MECHANISM FOR DOOR SELF-CLOSING

A redesigned classic, this self-closing mechanism is completely invisible from the outside. It is installed into the door panel while the opening arm is fixed to the frame.

Key Features

- It requires a milling to be machined on the header of the frame and on the upper edge of the door panel.
- Available with or without hold open.
- Available right-hand or left-hand.

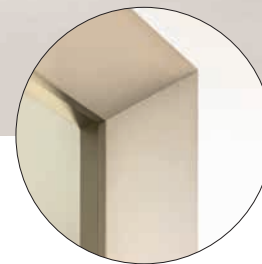


ECLISSE 40 COLLECTION

Splayed frames for flush-to-wall hinged doors.

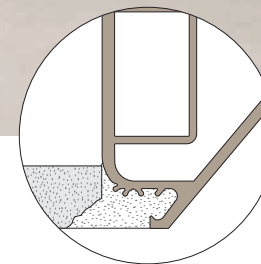


reddot winner 2020



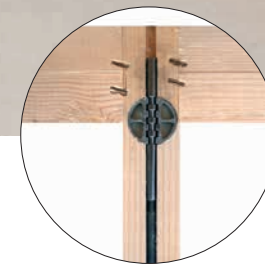
DURABLE OVER TIME

The aluminium frame undergoes an anodising treatment against oxidation and is then painted in different colours.



NO CRACKS!

The frame profile is specifically designed to avoid the formation of cracks.



STANDARD TENSIONING ROD

This adjustable device helps keep the door panel in constant tension, improving the door flatness and guaranteeing coplanarity with the wall.



5 FINISHES

ECLISSE 40 Collection is available in the raw primed version or in 4 exclusive painted finishes: Champagne, Bronze, Tobacco and White RAL 9010.



ECLISSE 40

Splayed frame for a flush-to-wall hinged door.
The frame seen from a new perspective.

L 600 ÷ 1000 mm
H 2100 ÷ 3000 mm



Intersections of surfaces. Plays of light and shadow.
The sloping profiles of ECLISSE 40 interpret the doorway in a new way. Reminiscent of the past but with a contemporary flair, they allow you to play with inclinations and transform the door into a decorative element, from a functional tool to a protagonist of the scene. All with the elegant discretion of a flush door on the opposite side.
A perfectly smooth aesthetic in one room, a dramatic, innovative, game-changing design in the other.

Profiles are available in a raw primer-coated finish, ready to be painted with the wall.
The frame blends perfectly into the wall and the passageway becomes a gate sculpted in solid matter.

Key Features

- The frame fits perfectly with ECLISSE Delta (baseboard).
- It can accommodate both wooden and glass doors.
- Frame also available without upper header, for flush-to-ceiling doors, for a continuous and free ceiling between adjacent rooms.



Paintable



Champagne



White



Bronze



Tobacco

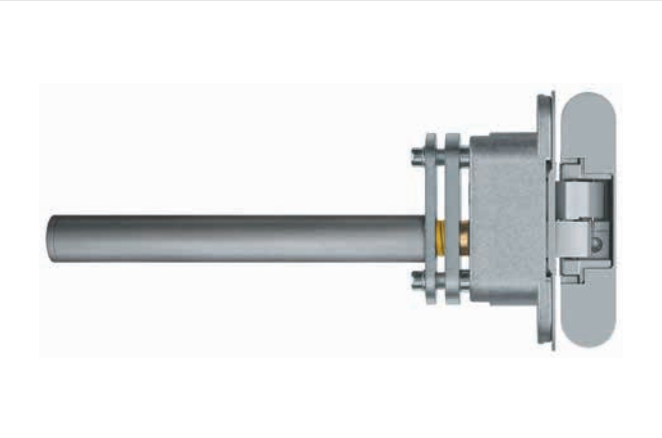






ACCESSORIES - ECLISSE 40 Collection

SELF-CLOSING DOOR HINGE



HYDRAULIC MECHANISM FOR SWING DOORS

The new self-closing door hinge is a soft-closing mechanism that gently closes flush-to-the-wall wooden hinged doors. Integrated in the central hinge, it is totally concealed and it enhance the aesthetic of the door considerably.

- Colours:**
- Champagne
 - Bronze
 - Tobacco
 - White
 - Aluminium chrome.



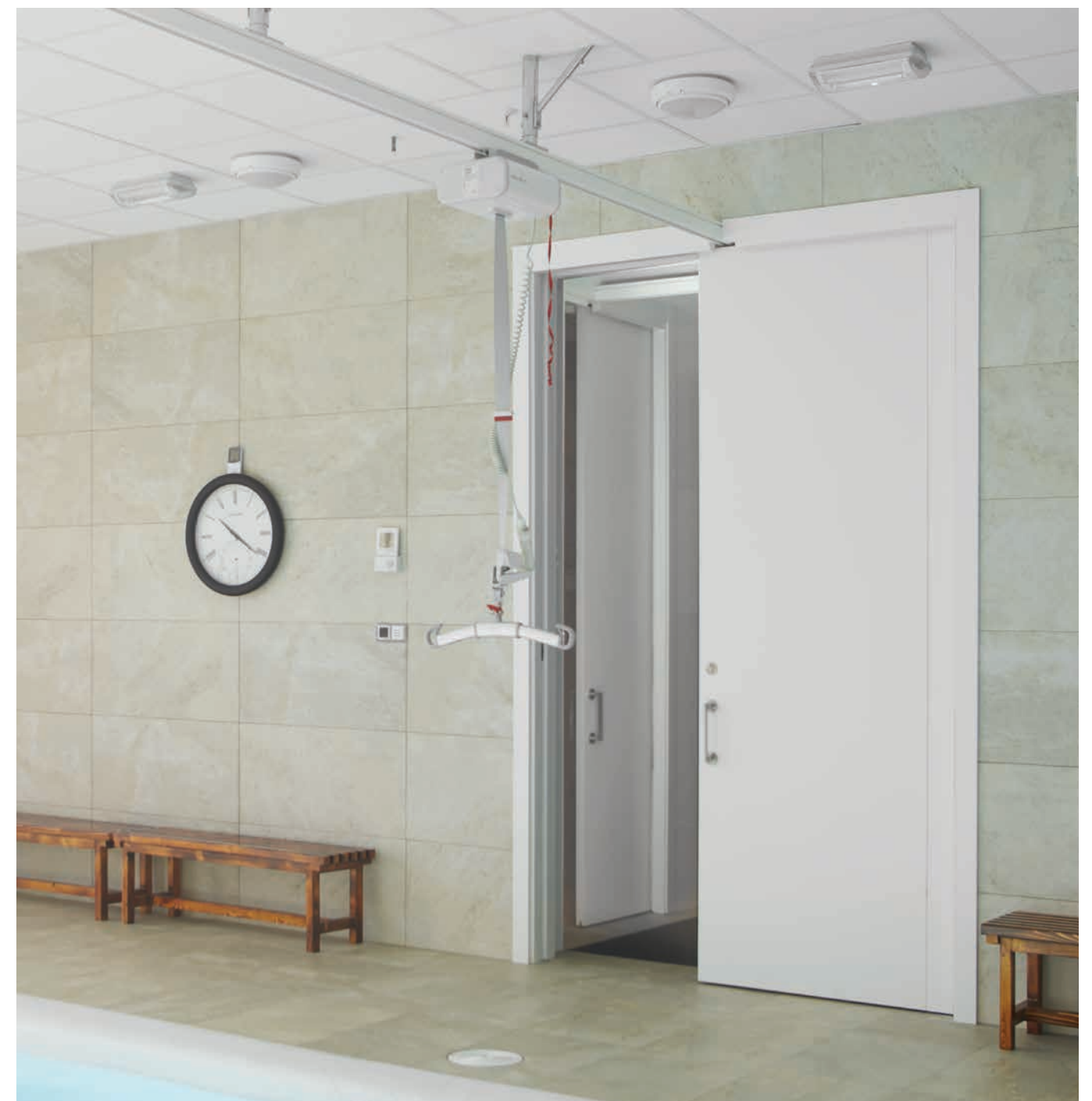
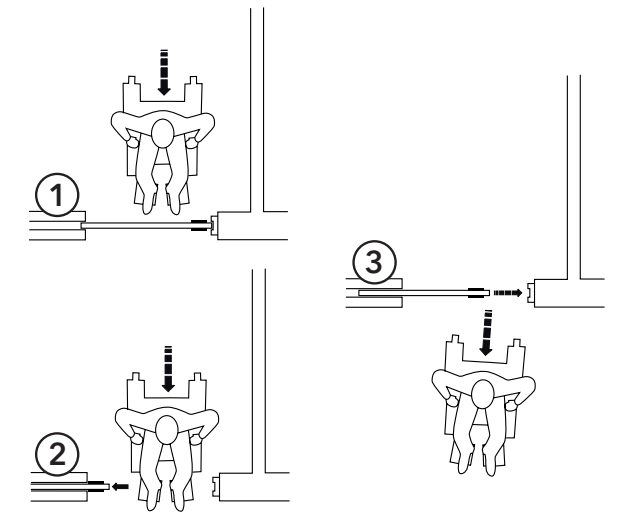
ECLISSE CARE COLLECTION

Special solutions for the mobility of elderly and people with disabilities.



ECLISSE HOIST

The solution for the domestic mobility of disabled persons.
No more architectural barriers in their own home.
 ECLISSE Hoist is a variation of the standard ECLISSE Single and ECLISSE Luce models, designed to be installed in conjunction with motorized rail lifting devices used to move and assist people with impaired mobility. The special shape of the track and the crosspiece does not interfere with the lifting device's rail, allowing at the same time for the rail to pass through and for the door to close.





ECLISSE EWOLUTO

A sliding pocket door systems for single or double door that can accomodate wall-mounted furniture and shelving on both sides. When space is tight, a pocket door is the ideal space-saving solution. Sometimes, however, the same tight spaces require that the portion of the wall that houses the counterframe can be equipped. ECLISSE EWOLUTO is the sliding pocket door system that solves the problem, allowing loads to be hung.

The special structure transforms the counterframe into a real wall that can bear exceptional weights, eliminating what is considered as a limit of sliding pocket door systems. Furniture, kitchen cabinets, wall units, hangers, and shelves can be installed directly on the wall that hosts the system, as well as safety grab bars and shower seats. No limits to your furnishing needs.



ECLISSE TWICE

The sliding pocket door system that turns into a swing door and doubles the passage width, just by pulling a lever. ECLISSE Twice is the hybrid system that allows a sliding pocket door to be transformed into a wide swing opening when required. It is a solution that temporarily doubles the passage width and is ideal in healthcare facilities or industrial premises, to facilitate the passage of patients' beds and large equipment without affecting the normal daily use of the basic pocket door.

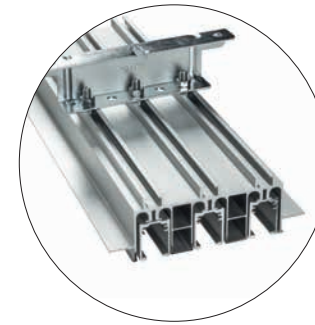
Thanks to a lever handle, the swing overall frame opens in an instant and just as easily return it to its basic shape. It couldn't be easier! The system consists of an anodised aluminium structure and two infill panels. The frame is available in aluminium finish or RAL colours, while the panels are made of primer-coated melamine-faced chipboard ready to be painted. For easy cleaning and maintenance, the panels are easily removable.





SPECIAL PRODUCTS

Special solutions for special projects.



CEILING TRACK

Sliding system for big openings.

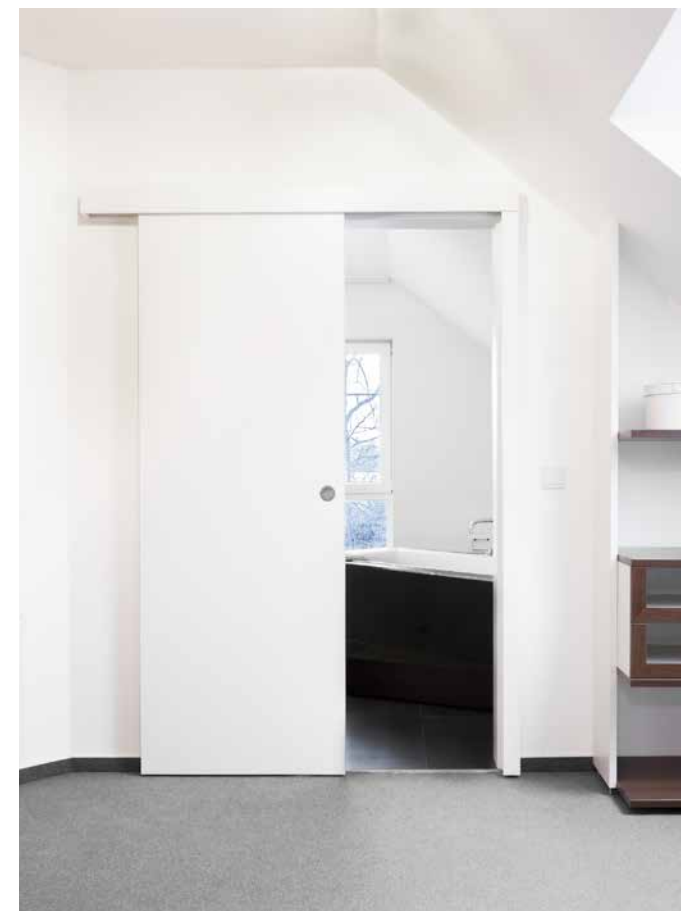
ECLISSE developed a sliding system that allows to divide two separate rooms if necessary, without giving up the possibility of having one single large space when doors are open. The multi-slide hardware set for ceiling mounted sliding doors allows the installation of door panels from floor level up to the ceiling height. It is available for single, double and triple door panel, for openings up to 6000 mm.



EXPOSED SLIDING DOOR KIT

Sliding door system with external track.

When you do not want to or you can't install a pocket door system, the solution is an exposed sliding door. Perfect for those who want the advantages of a sliding door without knocking down the wall. ECLISSE offers a sliding door kit that runs outside the wall, alongside it, designed to save space with no need for major masonry work.





BASEBOARDS



ECLISSE DELTA

The evolution of the flush skirting board.

This inclined baseboard presents a frontal illusion of a flush effect, while from the side it reveals a sloping volume that rises from the floor to join the wall surface. The geometry of its unique, polyhedral end elements add an original feature to your interior and they perfectly connect the baseboard to the inclined profiles of an ECLISSE 40 door frame.



ECLISSE SYNTESIS BASEBOARD

Flush baseboard.

Beyond traditional skirting boards. This aluminium profile allows to install a perfectly flush-to-the-wall skirting that runs along the wall without protruding. This way, furniture can be placed adherent to the wall, without remodelling the baseboard or leaving annoying gaps between the back of the furniture and the wall.





HANDLES

HANDLES FOR WOODEN DOORS



CASSIOPEA
For sliding doors

Shape:

- Square
- Round

Lock:

- Without lock
- Keyhole
- Thumb turn

Finishes:

- White
- Satin chrome
- Black



40+ONE
For sliding doors

Shape:

- Square

Lock:

- Without lock
- Keyhole
- Thumb turn

Finishes:

- White
- Satin chrome
- Champagne
- Bronze
- Tobacco



EASY
For sliding doors

Shape:

- Square
- Round

Lock:

- Without lock
- Keyhole
- Thumb turn
- For cylinder

Finishes:

- Polish brass
- Polish chrome
- Satin chrome



CASSIOPEA
For hinged doors

Shape:

- Square
- Round

Lock:

- Without lock
- Keyhole
- Thumb turn
- For cylinder

Finishes:

- Black
- Satin chrome



40+ONE
For hinged doors

Lock:

- Without lock
- Keyhole
- Thumb turn

Finishes:

- White
- Satin chrome
- Champagne
- Bronze
- Tobacco



PURE
For hinged doors

Nuda Collection by Verum Italy.

Lock:

- Without lock
- Keyhole
- Thumb turn

Finishes:

- White
- Black
- Satin chrome



WAVE
For sliding and hinged doors

Lock:

- Without lock
- Thumb turn
- For cylinder

Finishes:

- Anodised silver
- Satin chrome
- Matt black
- Matt white



DOOR PULL HANDLE
For ECLISSE Syntesis Line Battente and ECLISSE Syntesis Areo

Shape:

- Square
- Round

Finishes:

- Brushed nickel
- White



PULL LEVER HANDLE
For ECLISSE Syntesis Areo and ECLISSE Syntesis Tech

Finishes:

- Brushed nickel
- White



HANDLES FOR GLASS DOORS



GLASS FUSED HANDLE
For sliding doors



PAIR OF BAR HANDLELESS
For sliding doors

Finishes:

- Polish steel
- Satin steel



NISÍ
For sliding doors

Finishes:

- Polish chrome
- Satin chrome



THERA
For sliding doors

Finishes:

- Polish chrome
- Satin chrome



MYRTA
For sliding doors

Finishes:

- Polish chrome
- Satin chrome



KOS
For sliding doors

Finishes:

- Polish chrome
- Satin chrome

HANDLES FOR GLASS AND ALUMINIUM DOORS



STANDARD HANDLE
For single-glass pocket door

Finishes:

- White
- Aluminium
- Champagne
- Bronze
- Tobacco



HANDLE
For double-glass pocket door

Lock:

- Without lock
- Thumb turn

Finishes:

- White
- Aluminium
- Champagne
- Bronze
- Tobacco



ZANTE
For single-glass and double-glass hinged door

Lock:

- Without lock
- Thumb turn

Finishes:

- White
- Aluminium
- Champagne
- Bronze
- Tobacco



40+ONE
For single-glass and double-glass hinged door

Finishes:

- White
- Aluminium
- Champagne
- Bronze
- Tobacco



Scan for
WARRANTY





ECLISSE s.r.l. • Via Giovanni Pascoli, 7 - 31053 Pieve di Soligo TV - ITALY
Tel. +39 0438 985749 • international.sales@eclisse.it • www.eclisse.com