



# VISIONS

## INSIDE ARCHITECTURE

# #VediamoOltre

*Vediamo Oltre means we look further.*

*It is the reflection of our philosophy: a promise that we repeat every day, a commitment to see what others do not see, the meticulous attention to detail, a willingness to take nothing for granted. The synthesis of our work, what makes us different.*

*We strongly believe in the superior quality of our products and our objective is to develop and produce counterframes that are innovative, sturdy, easy to install and inspected.*

*Our ambition is to revolutionise the concept of counterframe for sliding pocket door systems, eclipsing any type of door.*

# #LookingFurther



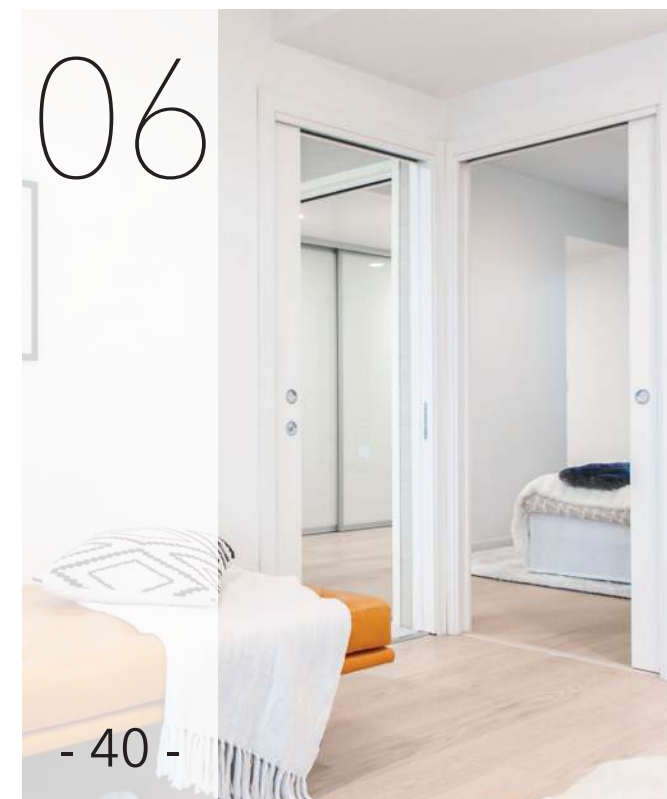
VILLA COLLIVO



HOUSE FRIDA



YACHT VIBE



LUMINARY



IDENTITÀ GOLOSE MILANO



WIDELY OPEN EYES



nZEB DESIGN OFFICE



ECLISSE MILANO



# 01

## VILLA COLLIVO



### PROJECT

A luxury vacation rental on the east shore of Lake Garda, halfway between Milan and Venice

### ARCHITECTS

Francesca Rapisarda, Roberto Facchinetti and Lorenzo Boscani

### LOCATION

Lazise (Italy)

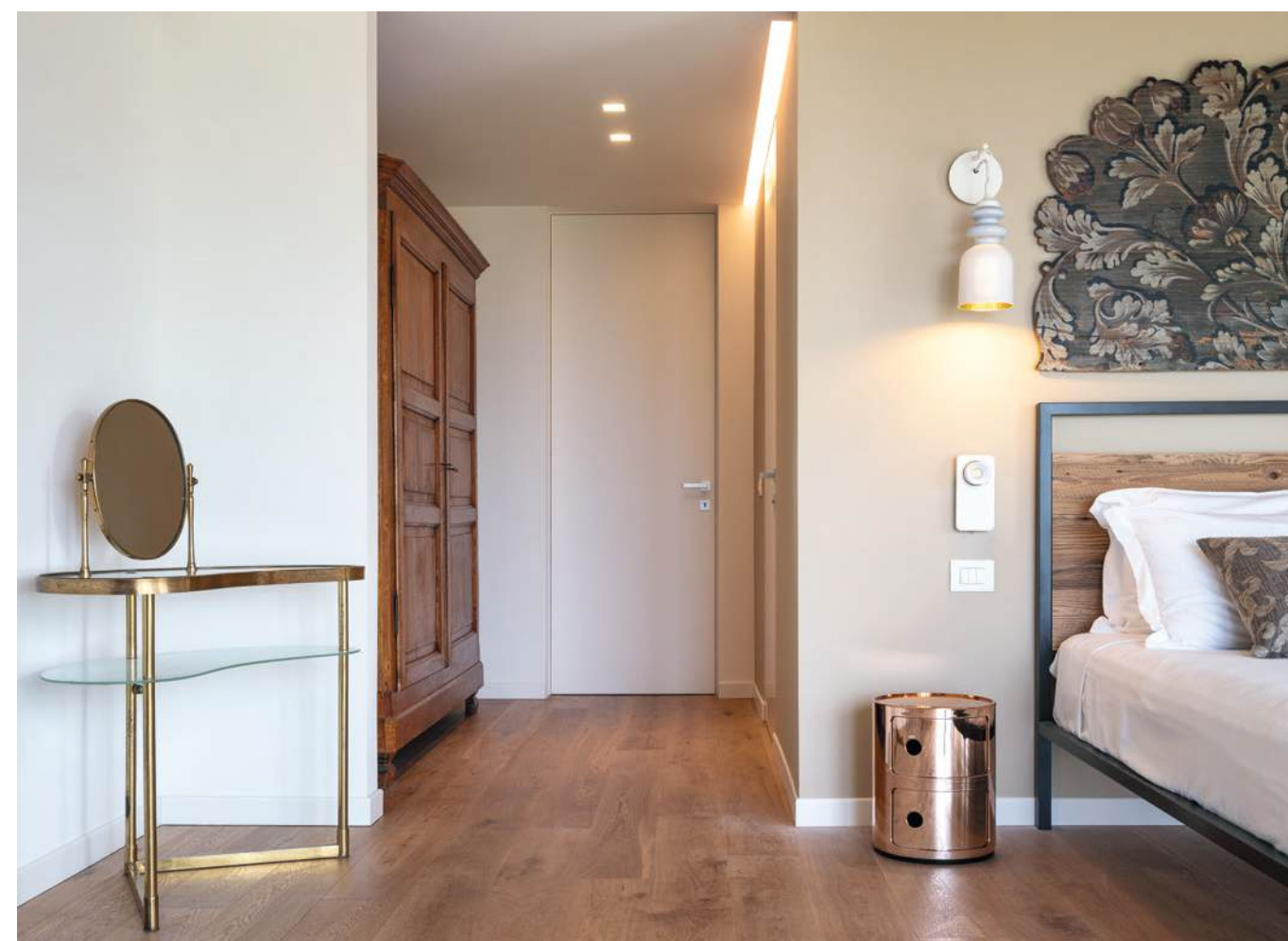
### YEAR

2019

### PRODUCTS

ECLISSE SYNTESIS LINE with glass door

ECLISSE SYNTESIS LINE BATTENTE



















*Conviviality, colour and warmth are at the heart of this project, located in a small town with ancient origins, now one of the most visited destinations in Italy. A holiday house designed to be open and welcoming, with wide openings to connect rooms.*

*ECLISSE Syntesis Line sliding pocket door systems were installed in the whole living area, complemented by glass door panels with no frame, in order to allow the guests to separate rooms lightly when needed, while disappearing completely when open.*

*In the bedroom area, on the contrary, the privacy of each suite is ensured by ECLISSE Syntesis Line Battente hinged doors, the flush-to-the-wall solution that provides maximum freedom of design and finishing.*



# 02

## HOUSE FRIDA



### PROJECT

Renovation of a 1920s house in the centre of Milan

### ARCHITECT

Deon Studio

### LOCATION

Milan (Italy)

### YEAR

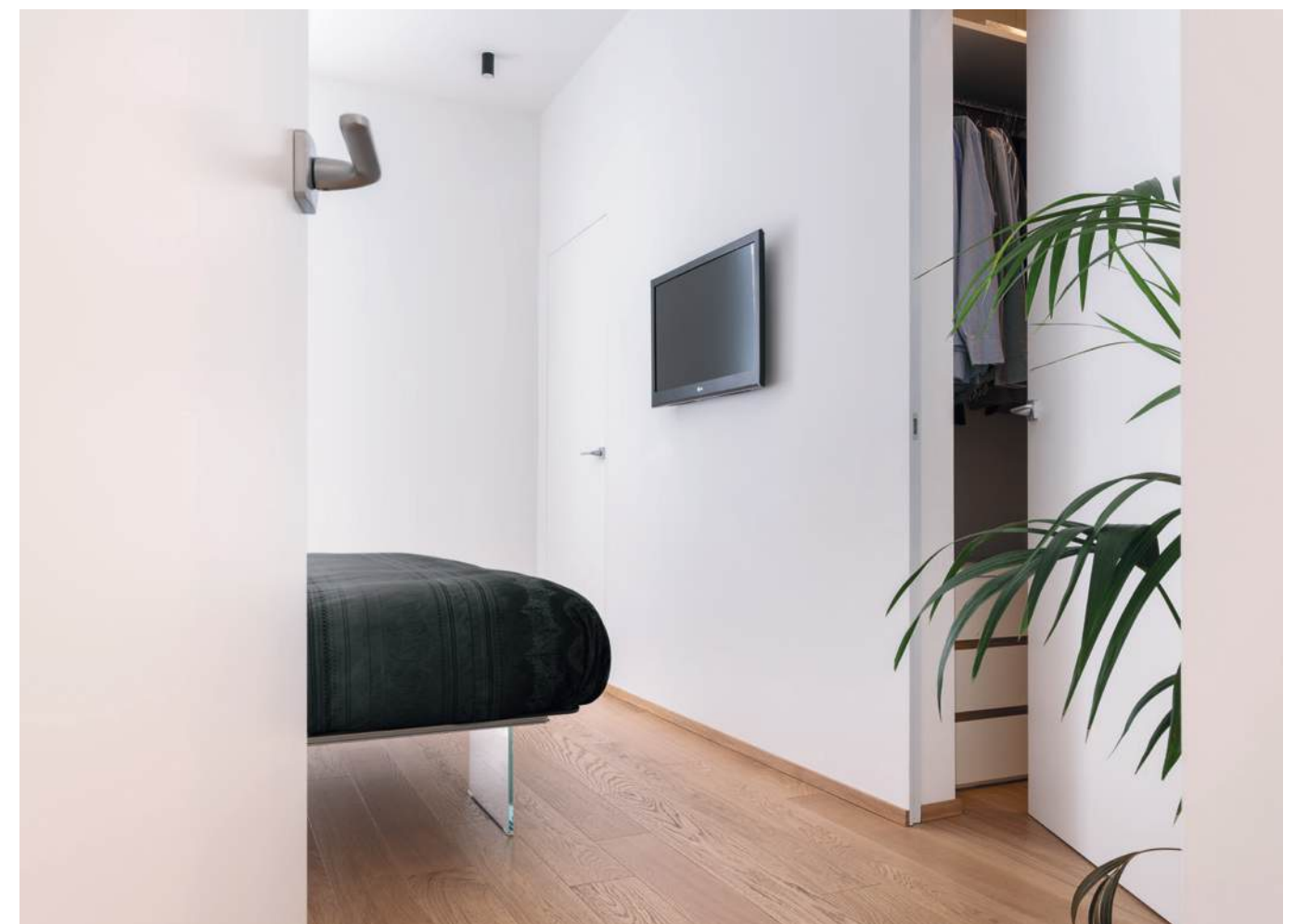
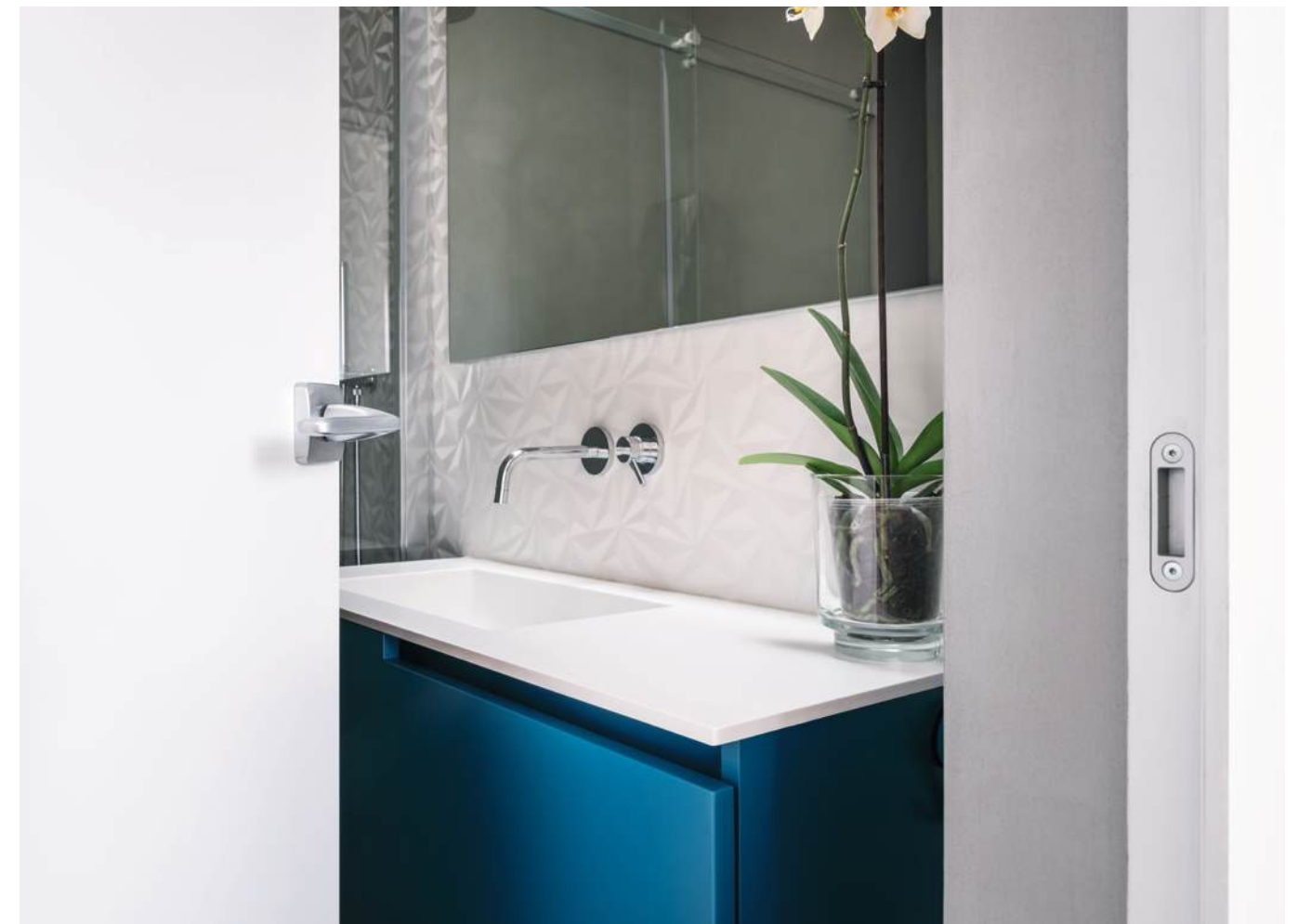
2018

### PRODUCTS

ECLISSE SYNTESIS LINE  
ECLISSE SYNTESIS LINE ESTENSIONE  
ECLISSE SYNTESIS LINE BATTENTE











*Named after the beloved black family cat, this renovation project joined and remodeled completely two of the four residential units of a 1920 house.*

*The aim was to recover the historical building and give it a second life, combining its Liberty soul, still explicit on the external façades, to a modern concept of the interiors.*

*To match the contemporary and minimalist style of the interiors, the design studio made use of the products from ECLISSE Syntesis Collection, the ideal solution to emphasise essential volumes and materials.*



# 03

## IDENTITÀ GOLOSE MILANO



### PROJECT

The first International Culinary Hub in Milan, home of the International Chef Congress

### ARCHITECTS

Digit&Associati - Arch. Orsola and Tordera

### LOCATION

Milan (Italy)

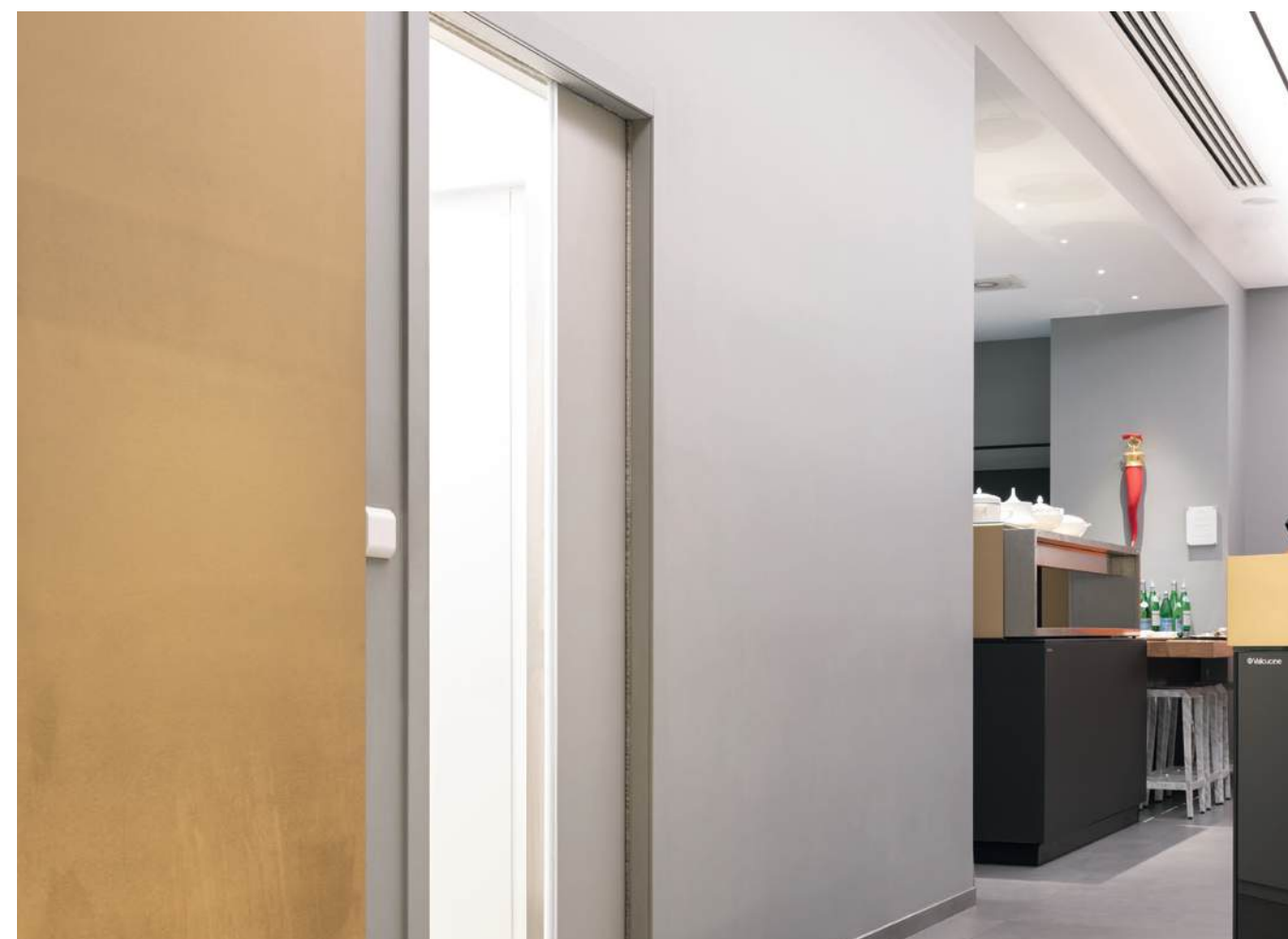
### YEAR

2018

### PRODUCTS

ECLISSE UNICO with E-MOTION

ECLISSE SYNTESIS LINE











Identità Golose Milano is a project aimed to create a reference point on the culinary scene, a place to host events and initiatives dedicated to haute cuisine and its main interpreters, a showcase of Italian and international food where visitors can taste the creations of world famous Michelin-starred chefs. The venue includes restaurants, conference halls, meeting rooms and other hospitality facilities. The versatility and eclecticism of the place is mirrored in its interior design, eccentric and vibrant, where the versatility of ECLISSE products has been declined according to the taste and unfettered imagination of the different designers who were involved in the project.



# 04

## WIDELY OPEN EYES



### PROJECT

From the soviet formal rigor of an industrial space to the fancy sophistication of a contemporary living space: a stylish loft with a wide open view of Vilnius

### ARCHITECT

PRUSTA Ltd - Architecture and Construction

### LOCATION

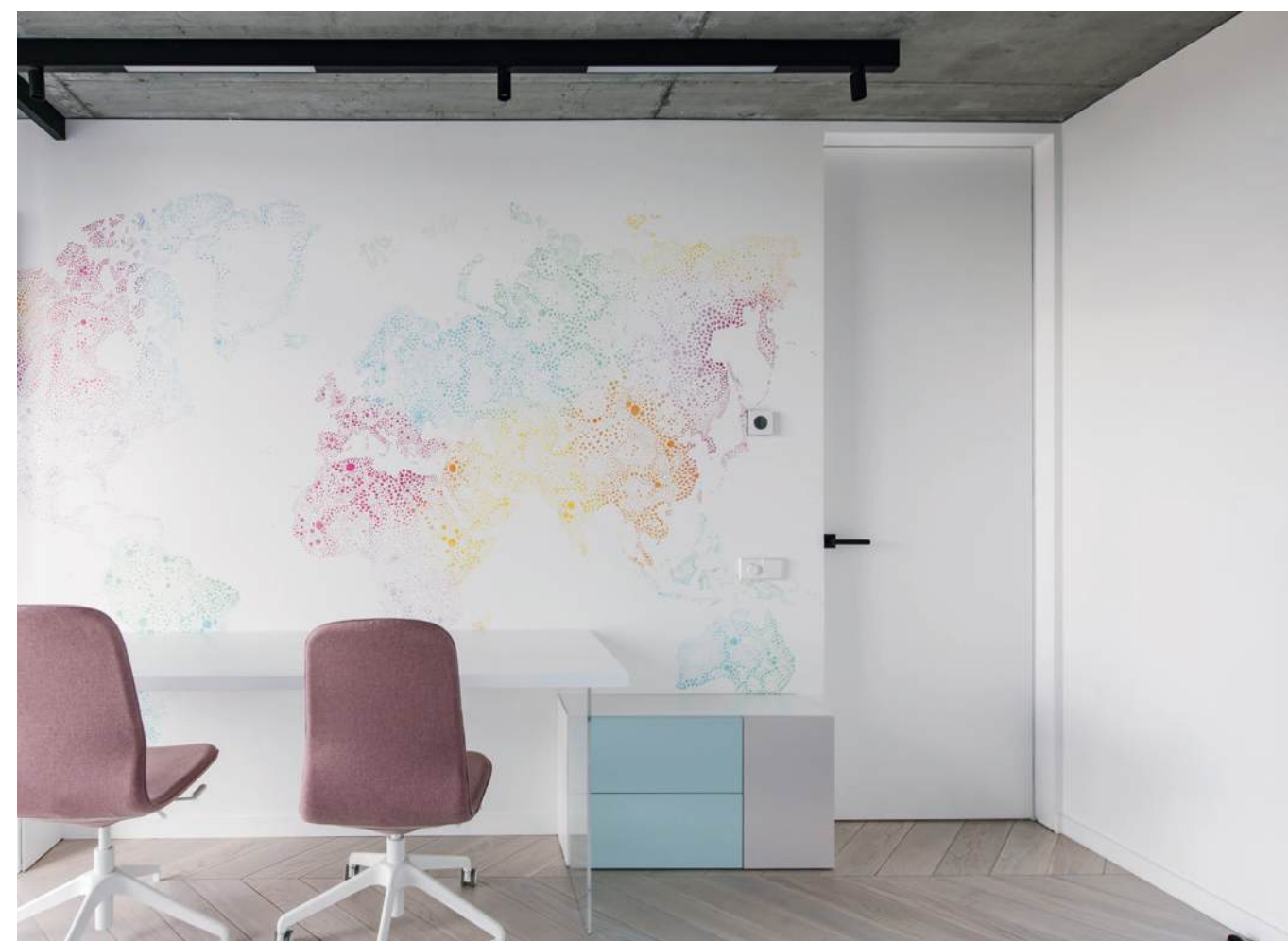
Naujamiestis, Vilnius (Lithuania)

### YEAR

2018

### PRODUCT

ECLISSE SYNTESIS LINE BATTENTE











*This industrial space was completely redesigned and transformed in a modern loft, where basic materiality of white and concrete combines with the luxurious touch of marble surfaces, brass details and royal blue fabrics. The same contrast is in the concept of open and private spaces, which coexist in flawless connection. In this setting, the essential features of ECLISSE Syntesis Line Battente fit perfectly, mixing the discretion of flush-to-the-wall white doors with the strong, striking appearance of black handles.*



# 05

## YACHT VIBE



### PROJECT

A private house inspired to the unique atmosphere of a luxury yacht

### INTERIOR DESIGNER

Eglė Prunskaitė-Braziulė

### LOCATION

Vilnius (Lithuania)

### YEAR

2019

### PRODUCT

ECLISSE SYNTESIS LINE











*This private house reinterprets the classic technique of panelling with flat, slick black wooden panels that conceal sliding pocket doors with the same finish.*

*Thanks to the high-tech specific design of ECLISSE Syntesis Line pocket door systems, conceived to be entirely camouflaged, the result is a wooden, seemingly uninterrupted wall where closed doors are almost invisible while open passages are neat and free of obstructions as if there were no door at all. What is wall and what is door?*



# 06

## LUMINARY



### PROJECT

A brand new 21-storey residential tower as catalyst for the rebirth of a whole district

### INTERIOR DESIGNER

Anna Katriina Tilli | MAK sisustusarkkitehtitoimiston

### LOCATION

Tampere (Finland)

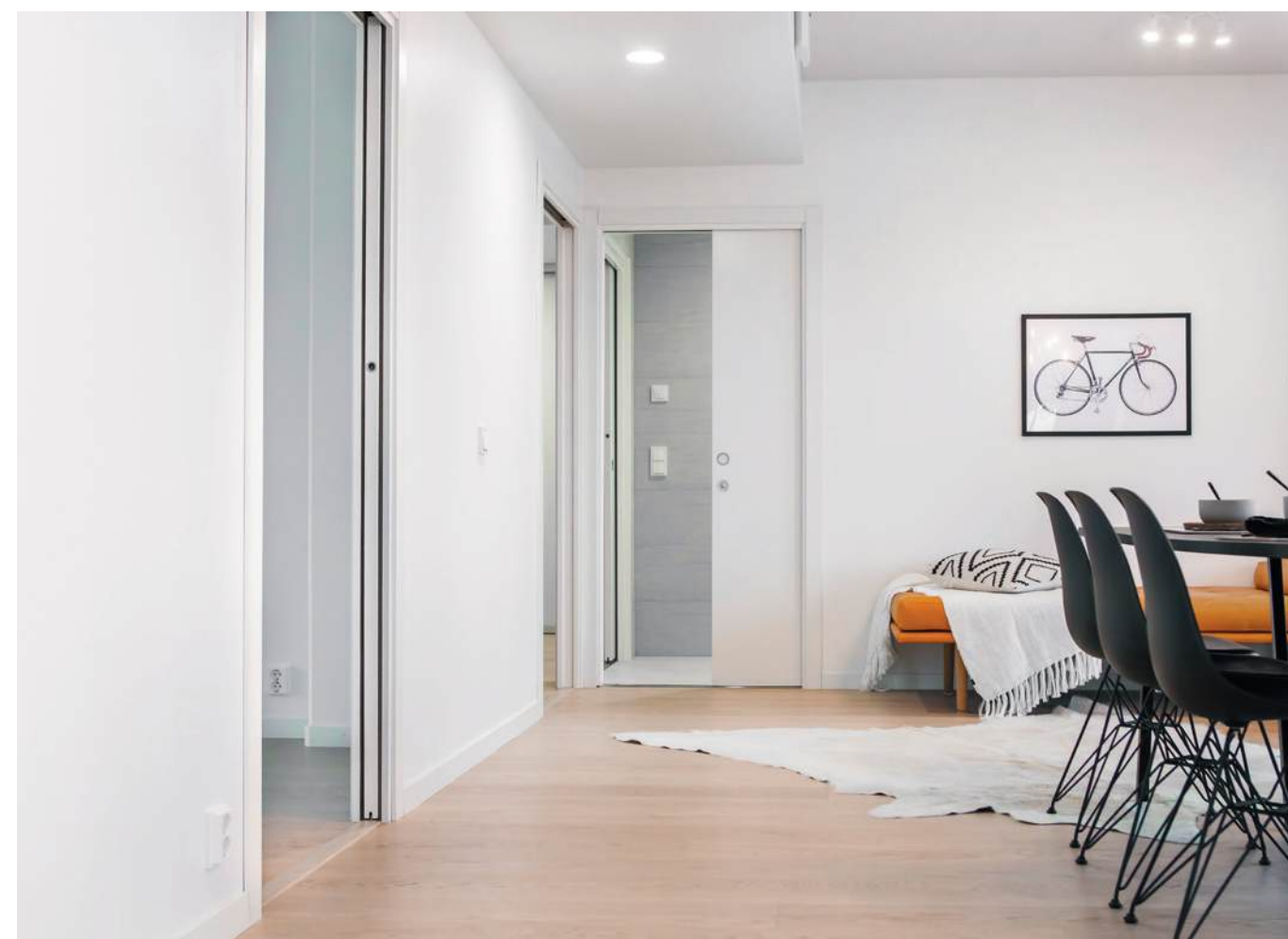
### YEAR

2019

### PRODUCTS

ECLISSE UNICO

ECLISSE ESTENSIONE











A new landmark in the city of Tampere, Luminary is the tallest residential building in the city, encompassing 188 apartments from studios to large penthouses. The project combines Scandinavian design, Finnish sustainable architecture trends and cutting-edge building technologies. The outcome of this combination are stylish and well-organized housing units, where large windows ensure bright natural light throughout the day and ECLISSE sliding pocket door systems provide a unique flexibility in the use of space.



07

## nZEB DESIGN OFFICE



### PROJECT

A modern working space designed in accordance with the *Nearly Zero Energy Building* standard, set inside a *Passive House* certified residential building

### ARCHITECT

Manuela Pelizzon

### LOCATION

Pieve di Soligo (Italy)

### YEAR

2019

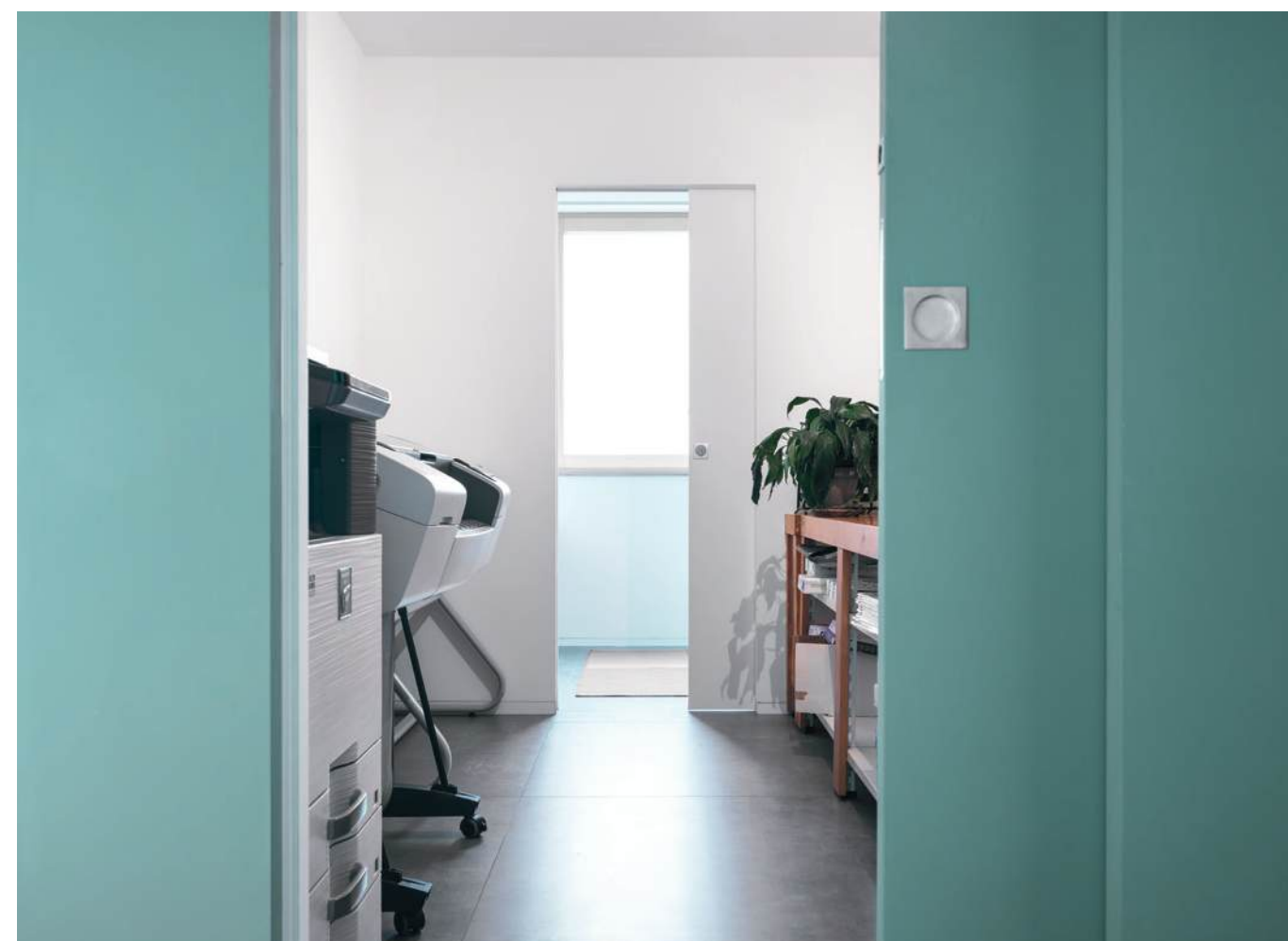
### PRODUCTS

ECLISSE SYNTESIS LINE

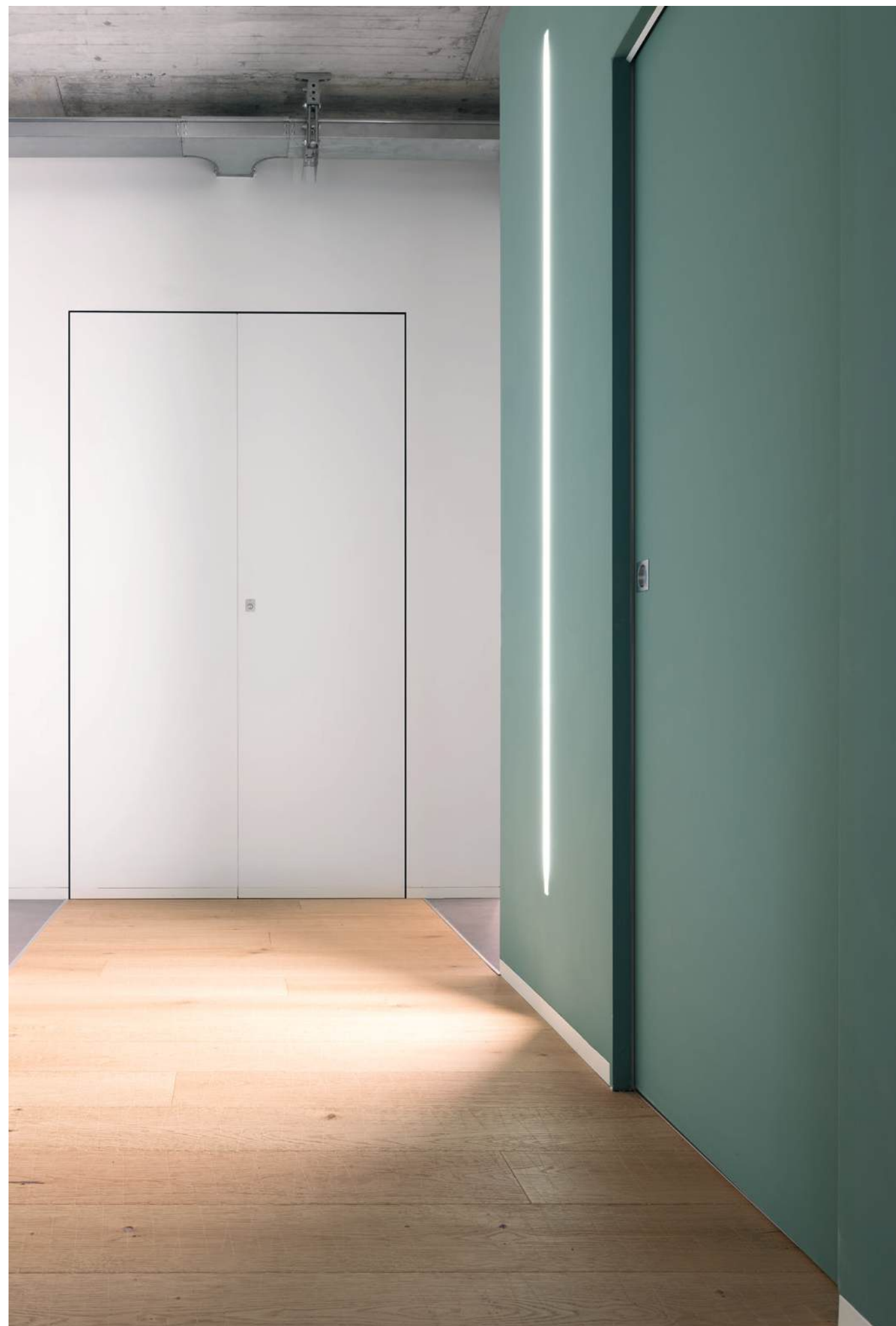
ECLISSE SYNTESIS LINE with glass door

ECLISSE SYNTESIS LINE BATTENTE ESTENSIONE

ECLISSE SYNTESIS BATTISCOPIA











Located on the ground floor of a building which had already received the Passive House certification, this working space was designed in accordance with the guidelines outlined by the Nearly Zero Energy Building (nZEB) EU standard. The clean style of the ECLISSE Syntesis Collection solutions match perfectly the fresh and lively overall design of the space, helping to create a clear and bright room for new ideas and projects to come to life.



08

## ECLISSE MILANO



### PROJECT

A new product exhibition in the ECLISSE flagship showroom

### ARCHITECT

ECLISSE with Pellegrinelli Arreda

### LOCATION

Milano (Italy)

### YEAR

2019

### PRODUCT

ECLISSE 40 COLLECTION











*A prestigious showcase in the heart of the city of fashion and design, the ECLISSE showroom now exhibits the innovative ECLISSE 40 COLLECTION. Inspired by the past and yet forward-looking, the inclined profiles of this product convey a new concept of door frame, that empties the surface and highlights the door, playing on light and shadows for an incomparable scenic effect.*



## PRODUCTS MATRIX

### ECLISSE UNICO

#### ECLISSE CLASSIC COLLECTION

##### PRODUCT:

Sliding pocket door system  
with jambs and architrave

##### VERSIONS:

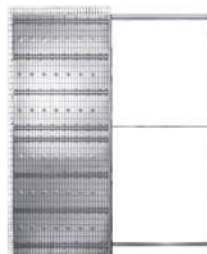
Stud wall / Solid wall

##### ACCESSORIES:

Soft Closing  
Glass Door

##### PRODUCT VARIANT:

ECLISSE HOIST  
ECLISSE ACOUSTIC



### ECLISSE SYNTESIS LINE

#### ECLISSE SYNTESIS COLLECTION

##### PRODUCT:

Sliding pocket door system  
without jambs and architrave

##### VERSIONS:

Stud wall / Solid wall

##### ACCESSORIES:

Soft Closing  
Glass Door



### ECLISSE SYNTESIS LINE ESTENSIONE

#### ECLISSE SYNTESIS COLLECTION

##### PRODUCT:

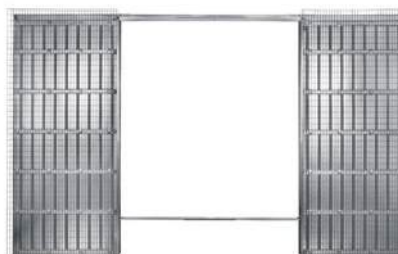
Sliding pocket door system  
without jambs and architrave

##### VERSIONS:

Stud wall / Solid wall

##### ACCESSORIES:

Soft Closing  
Double door coordination  
Glass Door



## PRODUCTS MATRIX

### ECLISSE SYNTESIS LINE BATTENTE

#### ECLISSE SYNTESIS COLLECTION

##### PRODUCT:

Frame doorset for flush  
single hinged door,  
without jambs and architrave

##### VERSIONS:

Same frame for stud wall  
and solid wall

##### ACCESSORIES:

Door Closer



### ECLISSE SYNTESIS LINE BATTENTE ESTENSIONE

#### ECLISSE SYNTESIS COLLECTION

##### PRODUCT:

Frame doorset for flush  
double hinged door,  
without jambs and architrave

##### VERSIONS:

Same frame for stud wall  
and solid wall

##### ACCESSORIES:

Door Closer



### ECLISSE SYNTESIS BATTISCOPA

#### ECLISSE SYNTESIS COLLECTION

##### PRODUCT:

Recessed skirting board adapter  
for the installation of a  
flush baseboard

##### VERSIONS:

Stud wall / Solid wall





## ECLISSE 40

### ECLISSE 40 COLLECTION

#### PRODUCT:

Frame doorset for single hinged door, flush on one side and splayed on the other side, without jambs and architrave

#### VERSIONS:

Same frame for stud wall and solid wall



### FINISHINGS

The special inclination of the frame allows it to play on light and shadows, creating a sense of depth and a new look.



PRIMER-COATED  
FINISH



LIGHT BRONZE  
FINISH



DARK BRONZE  
FINISH



GRAPHITE BRONZE  
FINISH

### THE HANDLE 40+UNO

These handles with clean lines, each one obtained from a single ingot of solid brass, are the result of the synergy between the Mandelli1953 brand and the two designers Valentini and Ponzelli. Inspired by the ECLISSE 40 Collection, it's manufactured in four finishes exclusively for ECLISSE.



40+uno  
SATIN-FINISH NICKEL



40+uno  
POLISHED NICKEL



40+uno  
MATT GRAPHITE



40+uno  
POLISHED PEARL-BLACK

### GET FEATURED ON VISIONS

Would you like to see your latest project in the next VISIONS? Get in touch with us and tell us more about it.

We would love to receive a few details about yourself, a description of the project, floor plans and drawings. Which ECLISSE products did you choose and why?

Contact email:  
[visions@eclisse.it](mailto:visions@eclisse.it)

### OUR SINCERE THANKS TO

**Gianni Crotta**  
for his cooperation in the  
*VILLA COLLIVO* project

**MAGENTA**bureau  
for their cooperation in the  
*IDENTITÀ GOLOSE MILANO* project

**Energy Plus Project**  
and  
**Studio Nadalin**  
for their cooperation in the  
*nZEB DESIGN OFFICE* project

**Ph. Enrico Dal Zotto**  
for the images of the  
Italian projects

**GSV Group, UAB. Vituko durys**  
and  
**Ph. Leonas Garbačauskas**  
for the images of the  
Lithuanian projects

**Muotolevy Rakennustutteet Oy**  
for the images of the  
Finnish project

The architects and designers

The owners of the various  
locations featured  
for their cooperation

**Frida the Black Cat**



ECLISSE | **WORLD**

ECLISSE | **ITALIA**

ECLISSE | **Brasil**

ECLISSE | **Česká Republika**

ECLISSE | **Deutschland**

ECLISSE | **España**

ECLISSE | **France**

ECLISSE | **Österreich**

ECLISSE | **Polska**

ECLISSE | **România**

ECLISSE | **Slovenská Republika**

ECLISSE | **United Kingdom**

**ECLISSE also has official distributors in:**

Belgium	Finland	Lithuania	Russia	Tunisia
Bielorussia	Hungary	Luxembourg	Serbia	Turkey
Denmark	India	Morocco	Sweden	USA
Estonia	Latvia	Netherlands	Switzerland	

Find your distributor in the Dealer Locator page at [www.eclisseworld.com/en/dealer-locator/](http://www.eclisseworld.com/en/dealer-locator/)





Via Giovanni Pascoli, 7 - 31053 Pieve di Soligo, Treviso, ITALY - T. +39 0438 980 513  
eclipse@eclipse.it - international.sales@eclipse.it  
www.eclipse.it - www.eclipse.com